

697-28198-EO

# 55B

serial no.

55BE S:001856 and up  
L:308091 and up

55BM S:250571 and up  
L:550911 and up

55B

## INTERCHANGEABILITY MARK

Whether or not there is interchangeability between the parts having the previous and new parts numbers is indicated by interchangeability marks.

Ref.No.	Parts No.	Description	Q'ty
▶ 1 *	697-85500-A0	C.D.I. MAGNETO ASS'Y	1 } B
◀ ※	663-85500-A1	C.D.I. MAGNETO ASS'Y	1 } B
▶ 2 *	697-85500-A0	. ROTOR ASS'Y	1 } B
◀ ※	663-85500-A1	. ROTOR ASS'Y	1 } B

Interchangeability Mark

\* Indicates new parts number

▶ } This mark is indicated serial number of marginal notes.

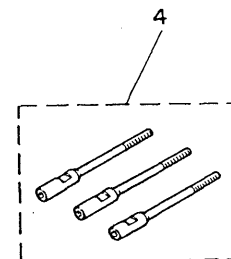
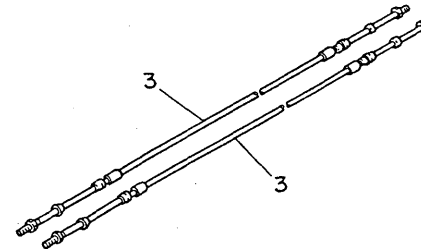
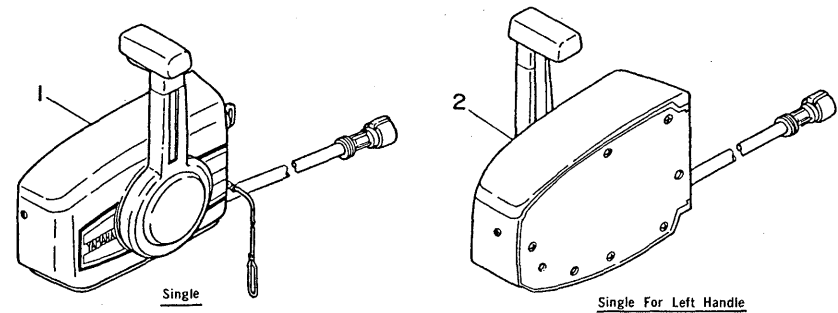
Mark A : The both new and previous parts are able to use for either previous or new engines.

Mark B : Not interchangeable, refer to serial number of marginal notes for ordering or using of parts.

Mark C : Interchangeable, but the previous parts are not able to use for new engines.

## REPAIR KIT

POWER HEAD GASKET KIT .....	697-W0001-00
LOWER UNIT GASKET KIT .....	698-W0001-20
REED SET .....	692-W0004-00
WATER PUMP REPAIR KIT .....	663-W0078-00
CHROME PUMP KIT .....	670-W0078-00
SAFETY STARTER KIT-55BM Model .....	697-W0079-00
HANDLE STEERING ASS'Y-55BM Model .....	697-W0084-00-F6
CRANK CYLINDER ASS'Y-55BE Model .....	697-W0090-00
CRANK CYLINDER ASS'Y-55BM Model .....	697-W0090-10
CARBURETOR REPAIR SET .....	663-W0093-00
LOWER UNIT ASS'Y (Short) .....	697-45300-00-F6
LOWER UNIT ASS'Y (Long) .....	697-45300-10-F6



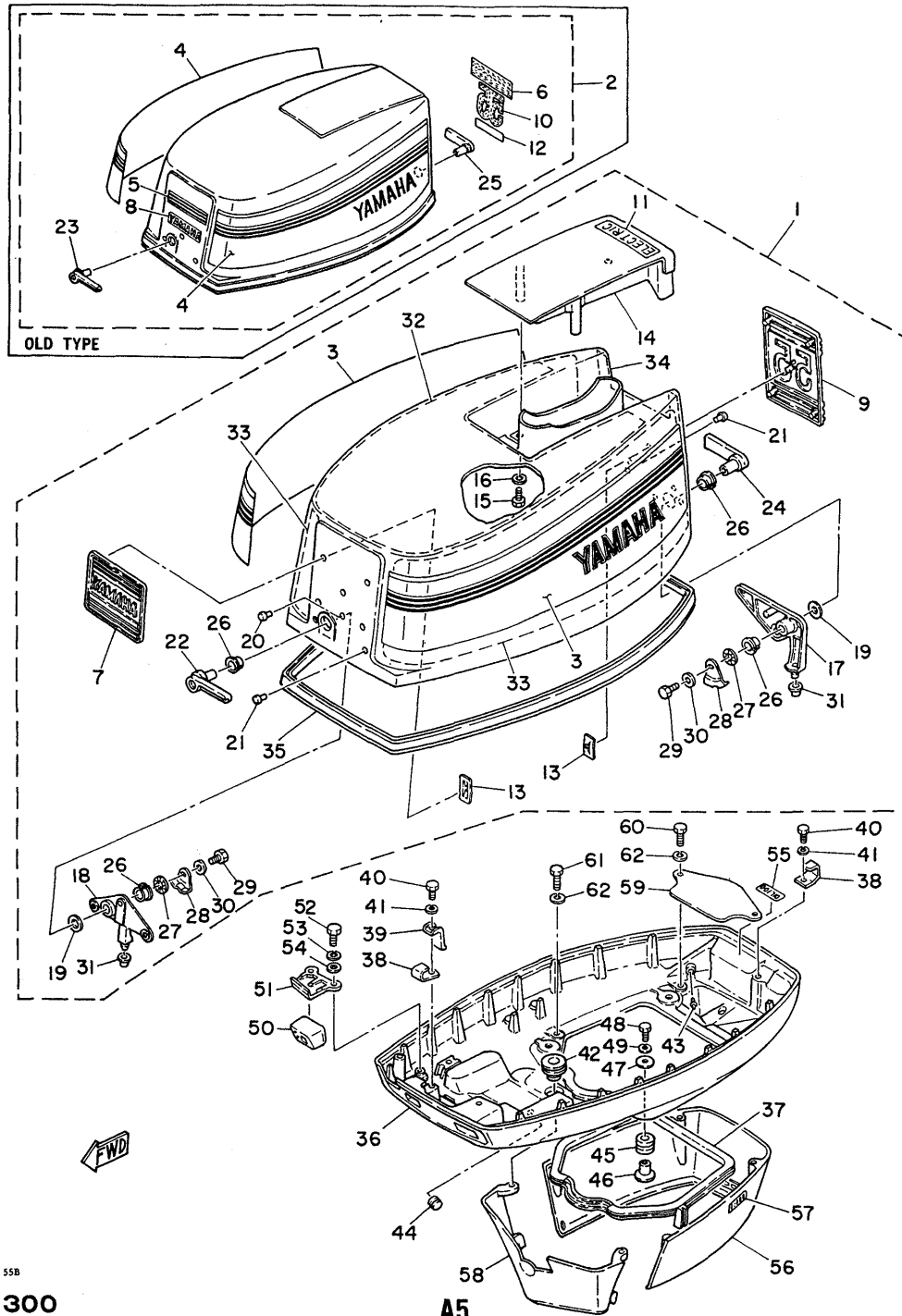
Ref.No.	Parts No.	Description	Q'ty
▲ 1	702-48230-10	REMOTE CONTROL ASS'Y	} U.R. 1
▲ 2	702-48240-10	REMOTE CONTROL ASS'Y	
3	701-48310-10	CABLE, remote control 6F	} U.R. 2
	701-48310-20	CABLE, remote control 7F	
	701-48310-40	CABLE, remote control 8F	
701-48310-60	CABLE, remote control 9F		
701-48310-90	CABLE, remote control 11F		
701-48320-00	CABLE, remote control 12F		
701-48320-20	CABLE, remote control 13F		
701-48320-30	CABLE, remote control 14F		
701-48320-50	CABLE, remote control 15F		
701-48320-60	CABLE, remote control 16F		
701-48320-80	CABLE, remote control 17F		
701-48320-90	CABLE, remote control 18F		
4	702-48291-00	TWIN ATTACHMENT ATTACHMENT 1	15

▲ See Fig. 15 for detail service parts



Fig. 2 COWLING '80/'81

COWLING '80/'81

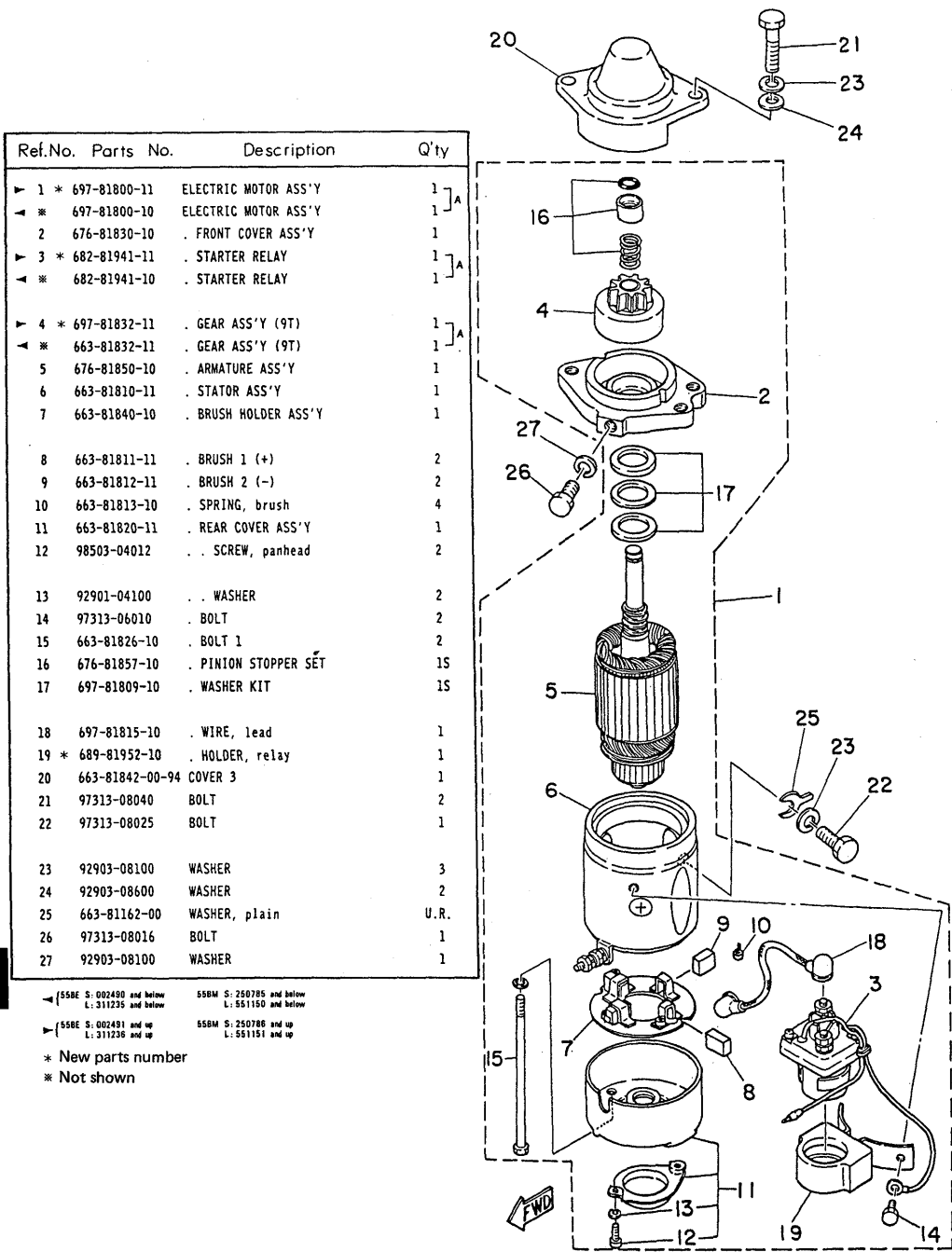


Ref.No.	Parts No.	Description	Q'ty	Ref.No.	Parts No.	Description	Q'ty
▶ 1 *	697-42610-81-F6	TOP COWLING ASS'Y	1	36	697-42711-00-F6	COWLING, bottom	1
▶ 2	697-42610-80-F6	TOP COWLING ASS'Y	1	37	663-42716-01	SEAL, rubber 1	1
▶ 3 *	697-W0070-20	GRAPHIC SIDE SET	15	38	663-42744-02	STAY	2
▶ 4	697-W0070-00	GRAPHIC SIDE SET	15	39	663-82594-02	CLAMP	1
▶ 5	697-42677-00	GRAPHIC, front	1	40	97313-06014	BOLT	2
▶ 6	697-42678-00	GRAPHIC, rear	1	41	92903-06100	WASHER	2
▶ 7 *	697-42686-10	EMBLEM, front	1	42	663-42724-00	GROMMET	1
▶ 8	697-42686-00	EMBLEM, front	1	43	663-24376-00	PIPE, joint 1	1
▶ 9 *	697-42687-01	EMBLEM, rear	1	44	90480-12004	GROMMET	1
▶ 10	697-42687-00	EMBLEM, rear	1	45 *	90480-09M12	GROMMET	4
▶ 11 *	697-42683-10	MARK, cowling 3	1	※	90480-15064	GROMMET	4
▶ 12	697-42683-00	MARK, cowling 3	1	46	90387-06M03	COLLAR	4
▶ 13 *	90183-05M01	NUT, speed	10	47	90201-06416	WASHER (6.56-266-1.6mm)	4
14	697-42613-00-F6	MOLDING, air duct	1	48	97313-06030	BOLT	4
15	97313-06016	BOLT	4	49	92903-06100	WASHER	4
16	92903-06600	WASHER	4	50	663-42725-00	GROMMET 2	1
17	697-42647-00-94	HOLDER, clamp band 1	1	51	663-42738-02-94	PLATE, fitting	1
18	697-42649-00-94	HOLDER, clamp band 2	1	52	97313-06016	BOLT	2
19	90202-19M10	WASHER (19φ-22φ-0.5mm)	1	53	92903-06100	WASHER	2
20	90266-06M02	RIVET	1	54	92903-06600	WASHER	2
21	90266-06009	RIVET	5	55	661-42791-80	MARK 1	1
▶ 22 *	697-42815-10-98	LEVER, clamp 1	1	56	663-42741-00-F6	APRON 1	1
▶ 23	697-42815-00-94	LEVER, clamp 1	1	57	663-42783-80	GRAPHIC, side	2
▶ 24 *	697-42817-10-98	LEVER, clamp 3	1	58	663-42771-01-F6	APRON 2	1
▶ 25	697-42817-00-94	LEVER, clamp 3	1	59	663-42723-01-94	COVER, bottom	1
26	90386-13057	BUSHING	4	60 *	97395-06020	BOLT	2
27	90206-13019	WASHER, wave (13.56-226-0.5mm)	2	※	97375-06020	BOLT	2
28	663-42816-02	LEVER, clamp 2	2	61 *	97395-06025	BOLT	2
29	97313-06012	BOLT	2	※	97375-06025	BOLT	2
30	90201-06068	WASHER (6.56-206-2.0mm)	2	62	92903-06100	WASHER	4
31	663-42662-00	DAMPER 1	2				
32	697-42617-00	RUBBER, form 1	1				
33	697-42619-00	RUBBER, form 2	2				
34	697-42637-00	RUBBER, form 4	1				
35	663-42615-02	SEAL	1				

◀ 558E S: 002480 and below L: 311235 and below      558M S: 250785 and below L: 551150 and below      ▶ 558E S: 002491 and up L: 311236 and up      558M S: 250786 and up L: 551151 and up

\* New parts number  
 ※ Not shown

Fig. 3 ELECTRIC MOTOR -'80/'81

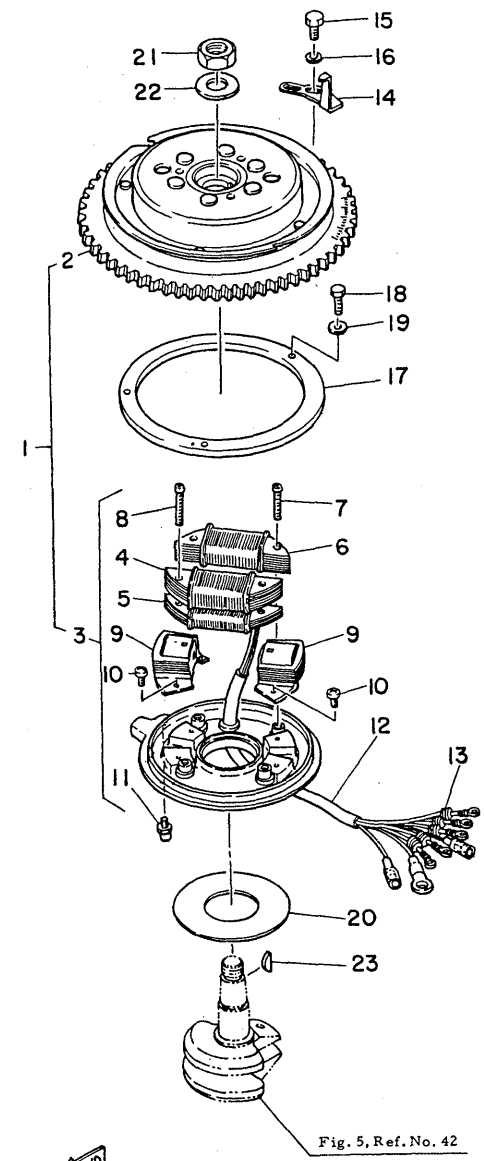


Ref.No.	Parts No.	Description	Q'ty
▶ 1 *	697-81800-11	ELECTRIC MOTOR ASS'Y	1 ]A
▶ *	697-81800-10	ELECTRIC MOTOR ASS'Y	1 ]A
2	676-81830-10	FRONT COVER ASS'Y	1
▶ 3 *	682-81941-11	STARTER RELAY	1 ]A
▶ *	682-81941-10	STARTER RELAY	1 ]A
▶ 4 *	697-81832-11	GEAR ASS'Y (9T)	1 ]A
▶ *	663-81832-11	GEAR ASS'Y (9T)	1 ]A
5	676-81850-10	ARMATURE ASS'Y	1
6	663-81810-11	STATOR ASS'Y	1
7	663-81840-10	BRUSH HOLDER ASS'Y	1
8	663-81811-11	BRUSH 1 (+)	2
9	663-81812-11	BRUSH 2 (-)	2
10	663-81813-10	SPRING, brush	4
11	663-81820-11	REAR COVER ASS'Y	1
12	98503-04012	SCREW, panhead	2
13	92901-04100	WASHER	2
14	97313-06010	BOLT	2
15	663-81826-10	BOLT 1	2
16	676-81857-10	PINION STOPPER SET	15
17	697-81809-10	WASHER KIT	15
18	697-81815-10	WIRE, lead	1
19 *	689-81952-10	HOLDER, relay	1
20	663-81842-00-94	COVER 3	1
21	97313-08040	BOLT	2
22	97313-08025	BOLT	1
23	92903-08100	WASHER	3
24	92903-08600	WASHER	2
25	663-81162-00	WASHER, plain	U.R.
26	97313-08016	BOLT	1
27	92903-08100	WASHER	1

▶ (55BE S: 002480 and below  
 L: 311235 and below  
 ▶ (55BE S: 002491 and up  
 L: 311236 and up  
 \* New parts number  
 \* Not shown

55BM S: 250785 and below  
 L: 551150 and below  
 55BM S: 250786 and up  
 L: 551151 and up

Fig. 4 C.D.I. MAGNETO -'80/'81

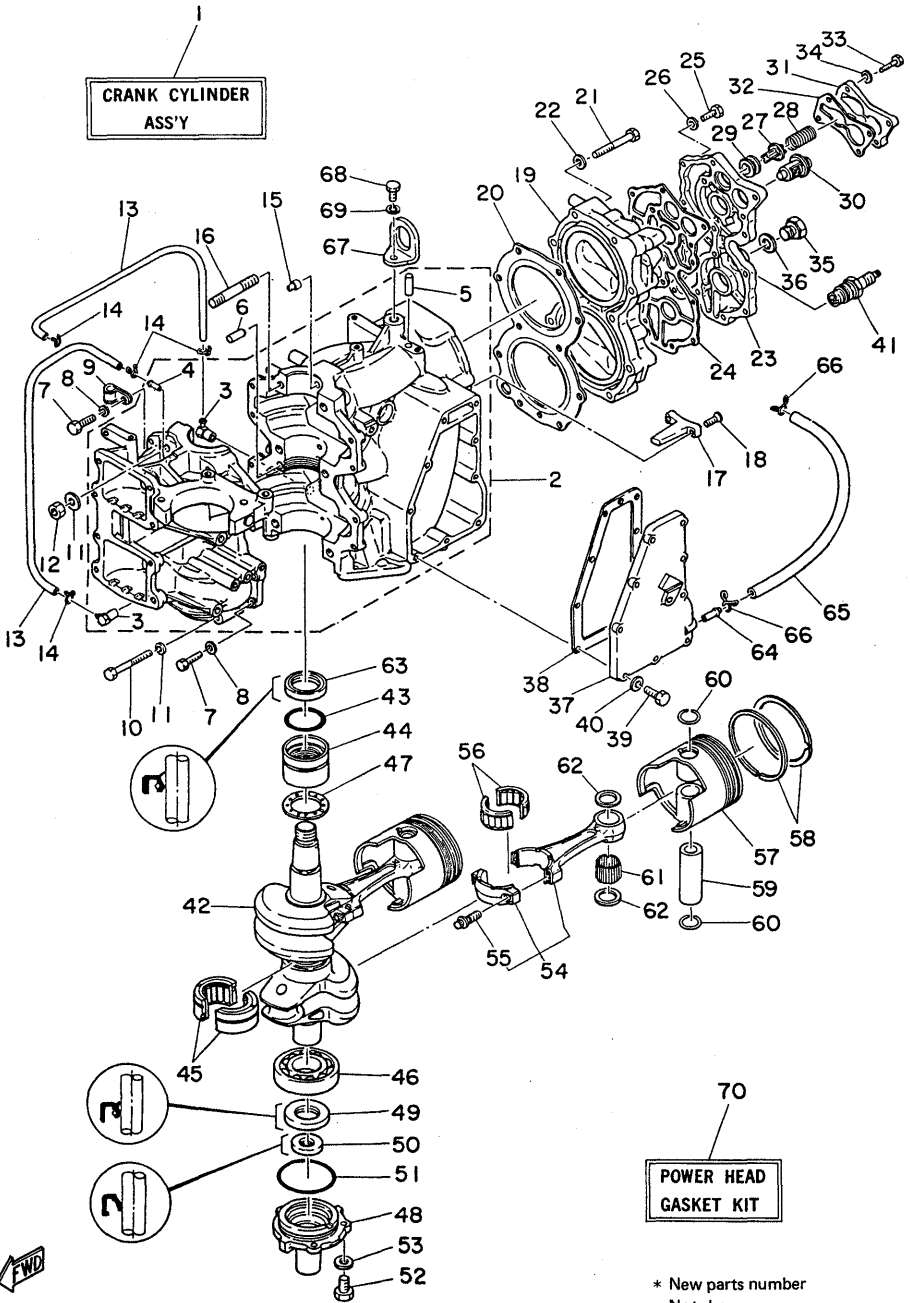


Ref.No.	Parts No.	Description	Q'ty
▶ 1 *	697-85500-A0	C.D.I. MAGNETO ASS'Y	1 ]B
▶ *	663-85500-A1	C.D.I. MAGNETO ASS'Y	1 ]B
▶ 2/ *	697-85550-A0	ROTOR ASS'Y	1 ]B
▶ *	663-85550-A1	ROTOR ASS'Y	1 ]B
▶ 3 *	697-85560-A0	BASE ASS'Y	1 ]A
▶ *	663-85510-A0	BASE ASS'Y	1 ]A
4	663-85541-A0	COIL, charge	1
5	663-85565-A0	COIL, trigger	1
6	663-81313-A0	COIL, lighting (80W)	1
7	98502-05030	SCREW, panhead	2
8	98502-05035	SCREW, panhead	2
9	663-85580-10	PULSER	2
10	98503-04010	SCREW, panhead	4
11	663-85518-00	JOINT, ball	1
12	663-85515-10	WIRE, lead	1
13	90480-06158	GROMMET	5
▶ 14 *	697-81332-00	PLATE, timing	1 ]B
▶ *	663-81332-01	PLATE, timing	1 ]B
15	97313-06016	BOLT	1
16	92903-06600	WASHER	1
17	663-41612-00	RETAINER, magneto base 2	1
18	97313-06020	BOLT	3
19	92903-06600	WASHER	3
20	663-41619-00	WASHER, magneto 2	1
21	90170-20137	NUT	1
22	90201-21M18	WASHER (216-366-3.2mm)	1
23	90280-05015	KEY, woodruff	1

▶ (55BE S: 002480 and below  
 L: 311235 and below  
 ▶ (55BE S: 002491 and up  
 L: 311236 and up  
 \* New parts number  
 \* Not shown

55BM S: 250785 and below  
 L: 551150 and below  
 55BM S: 250786 and up  
 L: 551151 and up

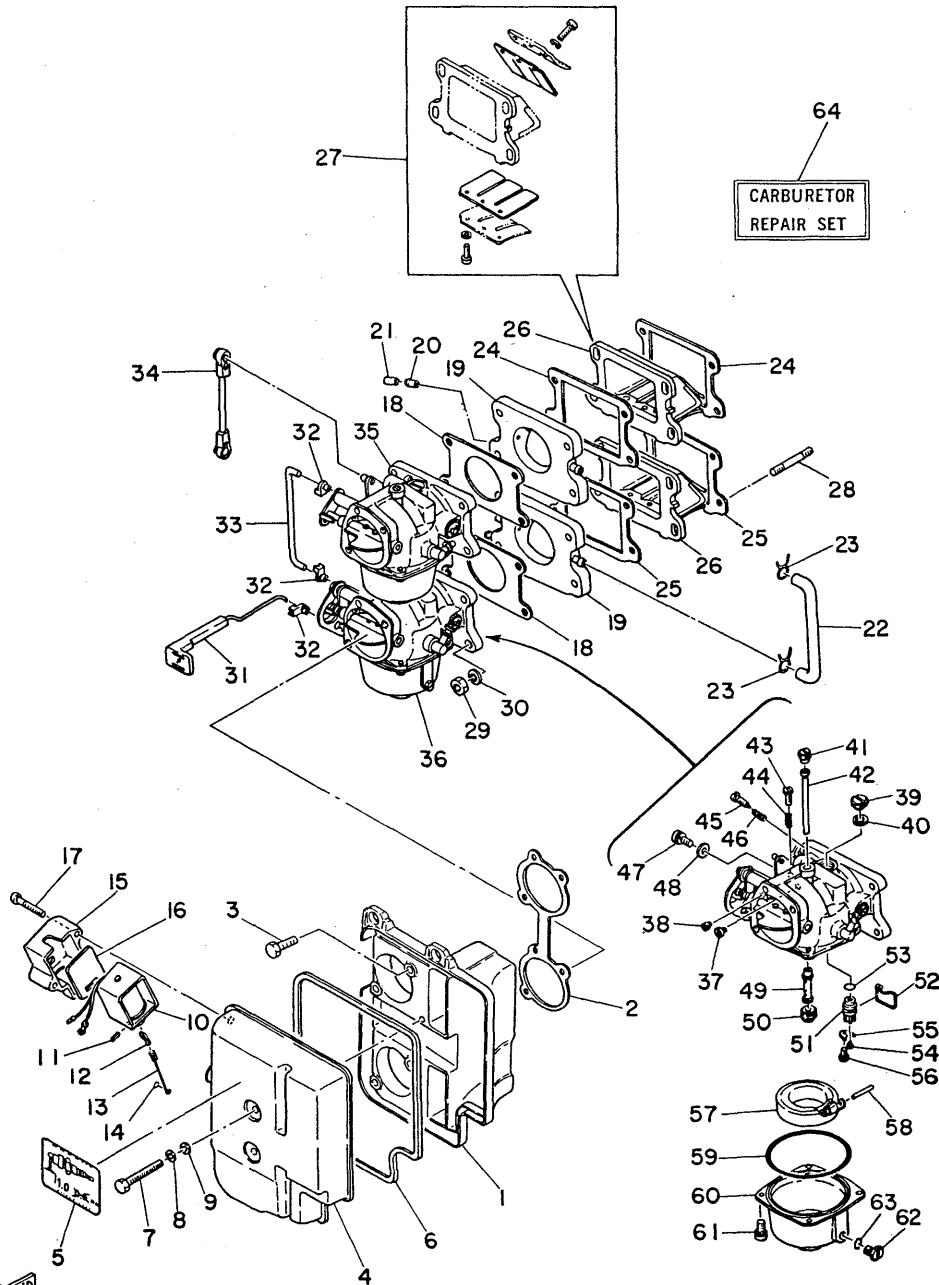
Fig. 5 CRANKCASE, CYLINDER & PISTON -'80/'81



\* New parts number  
 \* Not shown  
 ■ Contents of power head gasket kit

CRANKCASE, CYLINDER & PISTON -'80/'81

Ref.No.	Parts No.	Description	Q'ty	Ref.No.	Parts No.	Description	Q'ty
1	697-W0090-00	CRANK CYLINDER ASS'Y (Ref. No. 2 to 66)	1	42	663-11411-01	CRANK SHAFT	1
2	697-15100-00-94	CRANKCASE ASS'Y	1	43	93210-42159	O-RING (2.46-42.46)	1
3	650-11370-00	CHECK VALVE ASS'Y	2	44 *	93311-632U1	BEARING, needle	1
4	624-14485-00	PIPE, joint	1	*	93311-632Z3	BEARING, needle	1
5	93604-08062	PIN, dowel B (46-8mm)	1	45	93311-83219	BEARING, needle	1
6	93608-12063	PIN, dowel M (86-12mm)	1	46	93306-20611	BEARING (86206)	1
7	97313-06025	BOLT	8	47	663-11561-00	SHIM, crank	1
8	90201-06043	WASHER (6.46-12.56-2.0mm)	8	48	663-15359-01-94	HOUSING, oil seal	1
9	90461-04011	CLAMP, cord	1	49	93102-28135	OIL SEAL (SD-286-476-7mm)	1
10	97313-10055	BOLT	4	50	93104-18049	OIL SEAL (SO-186-306-5mm)	1
11	90201-10430	WASHER (10.56-186-2.3mm)	6	51	93210-62269	O-RING (2.46-61.56)	1
12	95313-10600	NUT	2	52 *	97395-06016	BOLT	3
13 *	90445-07240	HOSE (2.56-76-330mm)	2	*	97375-06016	BOLT	3
*	90445-07M26	HOSE	2	53	92990-06600	WASHER	3
14	90467-06016	CLIP	4	54 *	688-11650-00	CONNECTING ROD ASS'Y	2
15	663-11518-01	LOCK, bearing	2	*	663-11650-01	CONNECTING ROD ASS'Y	2
16	90116-10177	BOLT, stud	2	55	90109-08462	BOLT	4
17	663-11325-00	ANODE	1	56	93310-730A2	BEARING, needle	2
18 *	98680-04016	SCREW, ovalhead	2	57	688-11631-01-95	PISTON (Standard 81.95mm)	} U.R. 2
*	98680-04015	SCREW, ovalhead	2	688-11631-01-96	PISTON (Standard 81.96mm)		
19	663-11111-02-94	HEAD, cylinder	1	688-11631-01-97	PISTON (Standard 81.97mm)	} U.R. 2	
20	663-11181-00	GASKET, cylinder head	1	*	688-11635-01		PISTON (Over Size 82.25mm)
21	97313-08060	BOLT	10	*	688-11636-01	PISTON (Over Size 82.50mm)	2
22	648-11175-00	WASHER (8.16-176-2.3mm)	10	58	663-11610-80	PISTON RING SET (Standard)	25
23 *	663-11191-00-9M	COVER, cylinder head	1	*	663-11610-40	PISTON RING SET (Over Size 82.25mm)	25
*	663-11191-00-94	COVER, cylinder head	1	*	663-11610-50	PISTON RING SET (Over Size 82.50mm)	25
24	663-11193-00	GASKET, head cover	1	59	663-11633-00	PIN, piston	2
25	97313-06020	BOLT	12	60	663-11634-00	CLIP, piston pin	4
26	92903-06600	WASHER	12	61	93603-21111	BEARING, small end	56
27	663-12416-00	VALVE, pressure control	1	62	90201-20417	WASHER (20.46-24.46-1.4mm)	4
28	90501-14234	SPRING, compression	1	63 *	93102-32M07	OIL SEAL (SD-326-426-6mm)	1
29	90480-18065	GROMMET	1	64	650-24378-00	PIPE, joint 3	1
30	656-12411-01	THERMOSTAT	1	65	663-24312-01	HOSE 2 (56-96-260mm)	1
31	663-12413-00-94	COVER, thermostat	1	66	90467-08004	CLIP	2
32	663-12414-00	GASKET, thermostat cover	1	67 *	663-11119-00-94	HANGER, engine	1
33	97313-06030	BOLT	4	*	663-11119-01-94	HANGER, engine	1
34	92903-06600	WASHER	4	68	97313-08025	BOLT	1
35	90340-14036	PLUG, straight screw	1	69	92903-08100	WASHER	1
36	90430-14115	GASKET	1	70	697-W0001-00	POWER HEAD GASKET KIT	1
37 *	663-41113-00-9M	OUTER COVER, exhaust	1	*	663-41113-00-94	OUTER COVER, exhaust	1
*	663-41113-00-94	OUTER COVER, exhaust	1	38	663-41114-00	GASKET, outer cover	1
38	663-41114-00	GASKET, outer cover	1	39	97313-06020	BOLT	9
39	97313-06020	BOLT	9	40	92903-06600	WASHER	9
40	92903-06600	WASHER	9	41	94701-00160	PLUG, spark (B-8HS 10) NGK	2
41	94701-00160	PLUG, spark (B-8HS 10) NGK	2				



Ref.No.	Parts No.	Description	Q'ty	Ref.No.	Parts No.	Description	Q'ty
1	697-14417-00-94	COVER 1	1	▶ 36 *	697-14502-02	CARBURETOR ASS'Y (Lower)	1
■ + 2	663-14483-00	GASKET, plate	1	▶ *	697-14502-01	CARBURETOR ASS'Y (Lower)	1
3	97313-06025	BOLT	4	37	663-14950-27	. PILOT, air jet (#100)	2
4	697-14418-00-94	COVER 2	1	38	663-14945-32	. AIR JET, main (#125)	2
5	663-83621-00	MARK 1	1	39	663-14991-00	. PLUG, screw	2
6	697-14416-00	GASKET, air cleaner	1	◆ 40	679-14557-00	. WASHER, plate	2
7	97313-06045	BOLT	2	▶ 41 *	663-14567-00	. SCREW, plug	2
8	92903-06100	WASHER	2	▶ *	663-14567-01	. SCREW, plug	2
9	92903-06600	WASHER	2	▶ 42 *	663-14942-20	. JET, pilot (#82)	2
10	663-86110-02	SOLENOID COIL ASS'Y	1	▶ *	663-14942-19	. JET, pilot (#80)	2
11	91690-30010	PIN, spring	1	43	663-14523-00	. SCREW, stop (Lower)	1
12	676-86117-00	HOOK, wire pull	1	44	90501-10326	. SPRING, compression (Lower)	1
13	663-86116-01	WIRE, pull	1	◆ 45	663-14923-00	. SCREW, adjusting	2
14	93210-03261	O-RING (1.26-2.86)	1	46	90501-08214	. SPRING, compression	2
15	663-86115-00	HOLDER, solenoid	1	▶ 47 *	663-14592-00	. SCREW (Upper)	1
16	663-86118-00	DAMPER	1	▶ *	90159-05017	. SCREW, with washer (Upper)	1
17	97803-05030	SCREW, panhead	2	48	90201-05652	. WASHER (Upper)	1
■ + 18	663-14198-00	GASKET	2	49	663-14947-01	. NOZZLE, main	2
19	663-13641-02-94	MANIFOLD, intake 1	2	50	663-14943-39	. JET, main (#160)	2
20	624-14485-00	PIPE, joint	2	◆ 51	663-14590-01	. VALVE SEAT ASS'Y	2
21	647-14395-60	CAP, over flow pipe	1	52	663-14159-00	. CLIP	2
22	663-24321-00	HOSE	1	◆ 53	93210-07229	. O-RING (1.36-5.76)	2
23	90467-08004	CLIP, pipe	2	▶ ◆ 54 *	810-14186-00	. PIN, valve	2
■ 24	663-13621-00	PACKING, valve seat 1	2	▶ *	676-14186-00	. PIN, valve	2
■ 25	663-13622-00	PACKING, valve seat 2	2	55	371-14919-60	. PLATE, valve seat	2
26	697-13610-00	REED VALVE ASS'Y	2	56	98501-04006	. SCREW, panhead	2
27	692-W0004-00	. REED SET	25	◆ 57	663-14985-01	. FLOAT	2
28	90116-06176	STUD	8	◆ 58	663-14548-00	. PIN, arm	2
29	95303-06600	NUT	8	■ ◆ 59	93210-64272	. O-RING (1.96-646)	2
30	92903-06100	WASHER	8	60	663-14980-00	. BODY, float chamber	2
31	663-41256-01	ROD, choke link	1	◆ 61	90159-04007	. SCREW, with washer	8
32	661-41262-02	JOINT, choke lever	3	62	663-14992-00	. SCREW, drain	2
33	663-41257-01	ROD, choke link 2	1	◆ 63	806-14564-00	. O-RING	2
34	663-41217-01	ROD, accel. lever	1	◆ 64	663-W0093-00	CARBURETOR REPAIR SET	15
▶ 35 *	697-14501-02	CARBURETOR ASS'Y (Upper)	1				
▶ *	697-14501-01	CARBURETOR ASS'Y (Upper)	1				

◀ [558E S. 002490 and below  
L: 311235 and below

SSBM S: 250185 and below  
L: 551150 and below

▶ [558E S. 002491 and up  
L: 311236 and up

SSBM S: 250186 and up  
L: 551151 and up

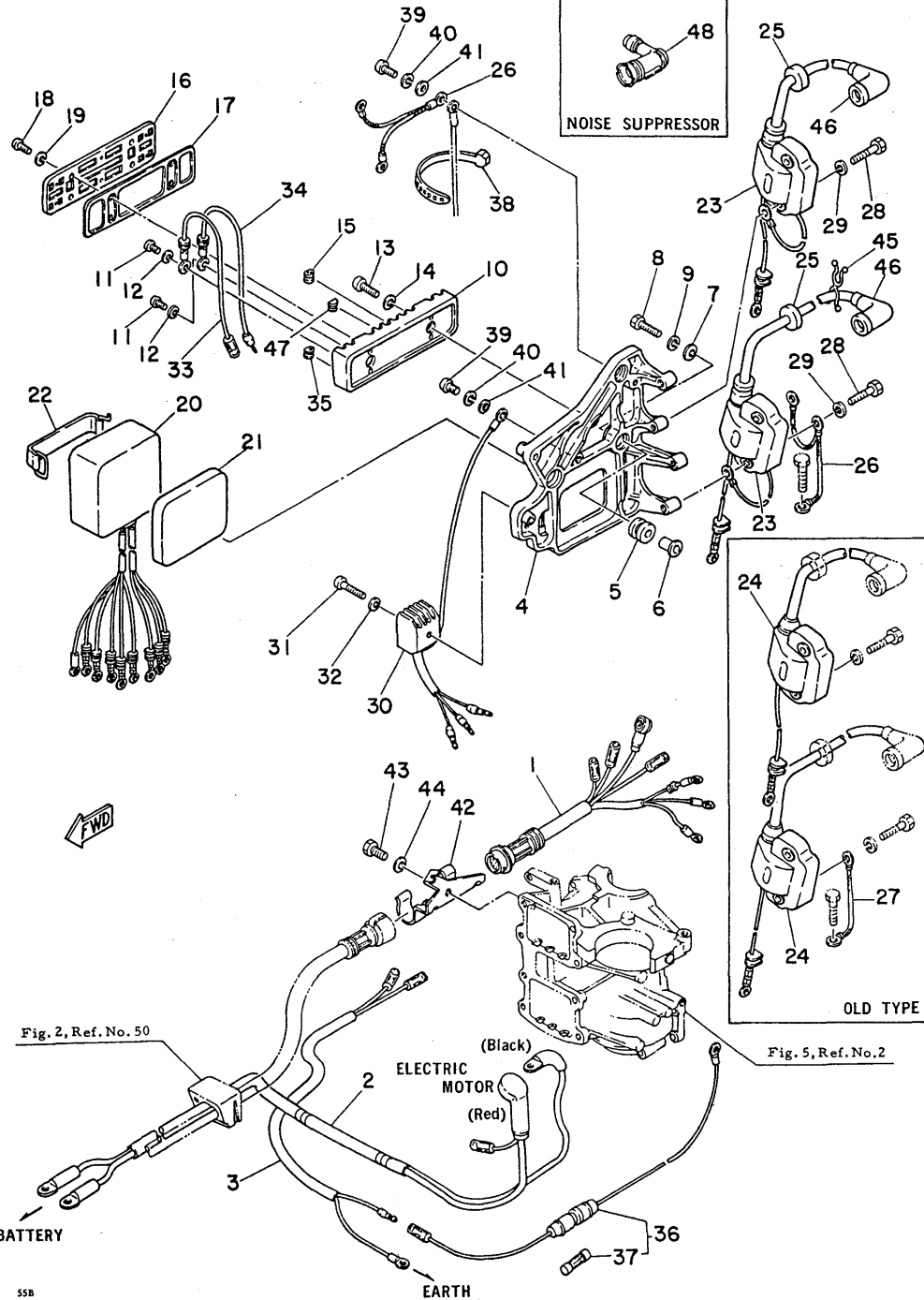
\* New parts number

■ Not shown

■ Contents of power head gasket kit (Parts No. 697-W0001-00)

◆ Contents of carburetor repair set

Fig. 7 ELECTRIC PARTS '80/'81



ELECTRIC PARTS '80/'81

Ref.No.	Parts No.	Description	Q'ty	Ref.No.	Parts No.	Description	Q'ty
1	697-82590-10	WIRE HARNESS ASS'Y	1	25	90480-25161	GROMMET	2
▶ 2 *	697-82105-11	WIRE, lead	1	▶ 26 *	697-82519-00	WIRE, earth lead	2
▶ *	697-82105-10	WIRE, lead	1	▶ 27	662-82519-00	WIRE, earth lead	2
3	697-81971-00	WIRE, lead	1	28	97313-06030	BOLT	4
4	663-85542-00-94	BRACKET	1	29	92903-06100	WASHER	4
5	663-82317-00	DAMPER	3	30	664-81970-60	RECTIFIER ASS'Y	1
6	624-42542-00	PIPE 1	3	31	97803-05030	SCREW, panhead	1
7	90201-06050	WASHER (6.2φ-15.6-1.0mm)	3	32	92903-05100	WASHER	1
8	97313-06025	BOLT	3	33	663-81315-00	WIRE, lead 1	1
9	92903-06100	WASHER	3	34	663-81316-00	WIRE, lead 2	1
10	663-81925-00	TERMINAL	1	35	663-81922-00	GROMMET	1
11	90157-04011	SCREW, panhead	10	36	682-82150-10	FUSE HOLDER ASS'Y	1
12	92903-04200	WASHER	10	37	663-82151-00	FUSE (12V-20A)	1
13	92503-06018	SCREW, panhead	2	38	663-83936-01	BAND	1
14	92903-06600	WASHER	2	39	92590-06012	SCREW, panhead	2
15	90480-06066	GROMMET	1	40	92990-06100	WASHER	2
▶ 16 *	697-81916-00	COVER, terminal	1	41	92990-06600	WASHER	2
▶ *	663-81916-00	COVER, terminal	1	42	697-82594-00	CLAMP	1
17	663-81921-00	GASKET, terminal	1	43	97303-08016	BOLT	1
18	98503-04020	SCREW, panhead	4	44	92903-08600	WASHER	1
19	92901-04100	WASHER	4	45	90464-08M02	CLAMP	1
20	663-85540-14	C.D.I. UNIT ASS'Y	1	46	663-82370-01	PLUG CAP ASS'Y	2
21	663-85547-01	DAMPER	1	47	90480-06066	GROMMET	1
22	663-82131-01	BAND	1	<b>OPTIONAL PARTS</b>			
▶ 23 *	697-85570-10	IGNITION COIL ASS'Y	2	48	677-82370-00	PLUG CAP ASS'Y (Noise Suppressor)	2
▶ 24	663-85570-12	IGNITION COIL ASS'Y	2				

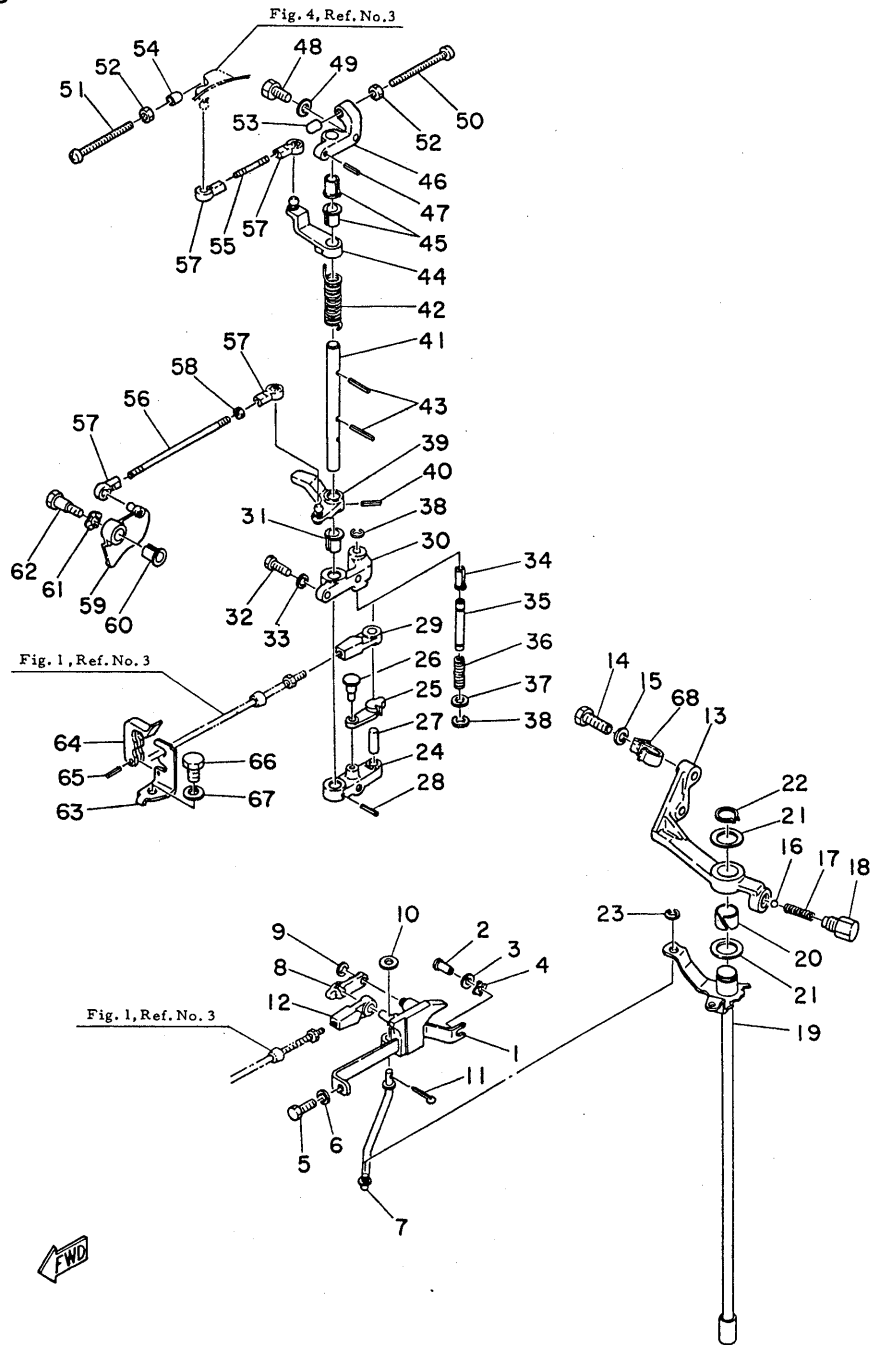
▶ S58E S: 002490 and below  
 L: 311235 and below  
 S58M S: 250785 and below  
 L: 551150 and below  
 ▶ S58E S: 002491 and up  
 L: 311236 and up  
 S58M S: 250786 and up  
 L: 551151 and up  
 \* New parts number  
 \* Not shown

Fig. 2, Ref. No. 50

Fig. 5, Ref. No. 2

Fig. 8 CONTROL -'80/'81

CONTROL -'80/'81



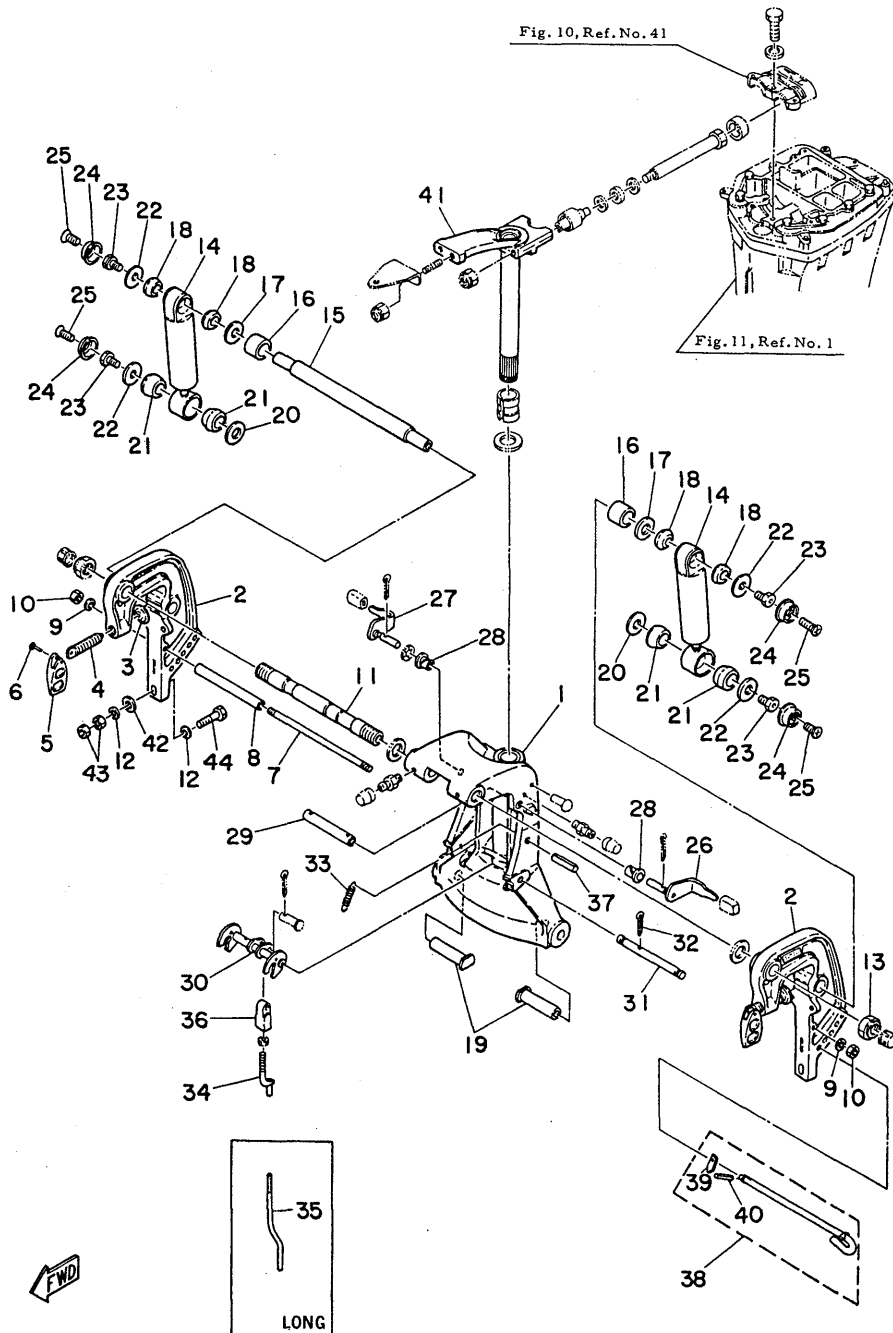
Ref.No.	Parts No.	Description	Q'ty	Ref.No.	Parts No.	Description	Q'ty
1	663-44117-00	BRACKET 1	1	35	663-44114-00	STOPPER	1
2	90241-06M00	PIN, clevis	1	36	90501-08232	SPRING, compression	1
3	92903-06600	WASHER	1	37	92903-06600	WASHER	1
4	90206-06040	WASHER, wave (6.26-126-0.5mm)	1	38	93430-05027	CIRCLIP (E-5φ)	2
5	97313-06018	BOLT	1	39	663-41633-00-94	LEVER, magneto control 3	1
6	92903-06600	WASHER	1	40	91690-30018	PIN, spring	1
7	663-44121-01	LEVER, shift rod	1	41	663-41635-00	SHAFT, link connecting	1
8	688-44171-00	LOCK LEVER	1	42	90508-20169	SPRING, torsion	1
9	93430-05027	CIRCLIP (E-5φ)	1	43	91690-30018	PIN, spring	2
10	92903-06600	WASHER	1	44	663-41631-00-94	LEVER, magneto control 1	1
11	91490-16012	PIN, cotter	1	45	90386-10009	BUSHING	2
12	663-48344-00	CABLE END, remote control	1	46	663-41661-00-94	BRACKET 1	1
13	663-44118-01-94	BRACKET 2	1	47	91690-40010	PIN, spring	1
14	97313-08030	BOLT	2	48	97313-06018	BOLT	1
15	92903-08100	WASHER	2	49	92903-06600	WASHER	1
16	93501-04M02	BALL (1/4")	1	50	90157-06013	SCREW	1
17	90501-12082	SPRING	1	51	90157-06014	SCREW	1
18	648-42715-00	BUSHING 2	1	52	95303-06700	NUT	2
19	663-44120-04	HANDLE GEAR SHIFT ASS'Y (Short 381.5mm)	1	53	688-44194-00	CAP	1
*	663-44120-14	HANDLE GEAR SHIFT ASS'Y (Long 505.5mm)	1	54	663-44194-00	CAP	1
20	90386-16046	BUSHING	1	55	663-41636-00	ROD, magneto control	1
21	90202-16061	WASHER (16.56-266-1.0mm)	2	56	663-41211-10	LINK, accel.	1
22	93410-16006	CIRCLIP (S-16φ)	1	57	662-41237-01	JOINT, link 2	4
23	93430-05027	CIRCLIP (E-5φ)	1	58	95303-05600	NUT	1
24	663-41632-00-94	LEVER, magneto control 2	1	59	663-41213-01-94	CAM, accel.	1
25	663-41282-00	STOPPER, free accel. link	1	60	90386-10009	BUSHING	1
26	90249-05125	PIN	1	61	90206-10M04	WASHER, wave (10.56-186-3.0mm)	1
27	93607-23110	PIN, dowel B (76-23mm)	1	62	90109-06260	BOLT	1
28	91690-30018	PIN, spring	1	63	663-48531-00	BRACKET, remote control	1
29	663-48344-00	CABLE END, remote control	1	64	663-48538-00	CLAMP, cable 1	1
30	663-41662-00-94	BRACKET 2	1	65	91690-30012	PIN, spring	1
31	90386-10009	BUSHING	1	66	97313-08016	BOLT	1
32	97313-06018	BOLT	2	67	92903-08100	WASHER	1
33	92903-06600	WASHER	2	68	90462-05M02	CLAMP, cord	1
34	90386-06044	BUSHING	1				

\* New parts number  
\* Not shown



Fig. 9 BRACKET 1 -'80/'81

BRACKET 1 -'80/'81

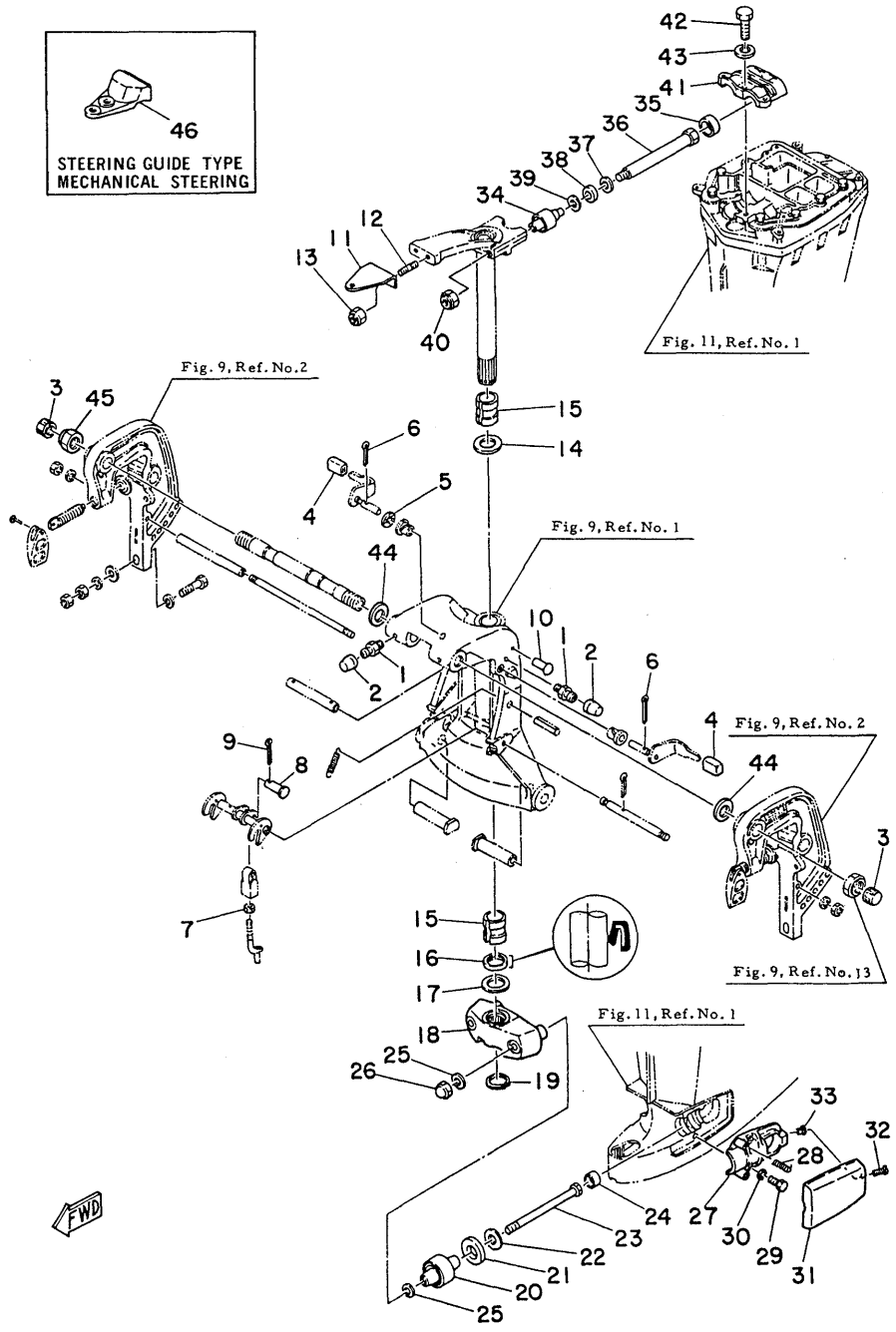


Ref.No.	Parts No.	Description	Q'ty	Ref.No.	Parts No.	Description	Q'ty
1	663-43311-00-F6	BRACKET, swivel 1 (Short)	1	27	* 697-43185-00	LEVER, tilt stop 2	1
*	663-43311-10-F6	BRACKET, swivel 1 (Long)	1	28	* 663-43185-02	LEVER, tilt stop 2	1
2	663-43111-00-F6	BRACKET, clamp 1	2	28	90386-10045	BUSHING	2
3	648-43114-01	PAD, transom clamp	2	29	90387-10269	COLLAR (10.86-146-108mm)	1
4	* 663-43116-00	SCREW, transom clamp	2	30	* 697-43610-00	TILT LOCK ASS'Y	1
*	663-43116-01	SCREW, transom clamp	2	31	* 663-43610-02	TILT LOCK ASS'Y	1
5	663-43118-00	HANDLE, transom clamp	2	31	663-43611-01	SHAFT, tilt lock	1
6	90243-04007	PIN	2	32	91490-25025	PIN, cotter	1
7	663-43123-00	BOLT, clamp bracket 2	1	33	90506-12078	SPRING, tension	1
8	90387-10271	COLLAR (10.86-146-157mm)	1	34	663-43616-02	ROD, tilt lock 1 (Short)	1
9	92990-10600	WASHER	2	35	663-43616-11	ROD, tilt lock 1 (Long)	1
10	95380-10600	NUT	2	36	663-43653-00	NUT, connection	1
11	663-43131-00	BOLT, clamp bracket	1	37	91690-40040	PIN, spring	1
12	92990-10600	WASHER	8	38	676-43160-01	TILT ROD ASS'Y	1
13	90185-22043	NUT, self-locking	1	39	676-43165-00	STOPPER PLATE	1
14	663-43170-02-94	SHOCK ABSORBER ASS'Y	2	40	91690-30010	PIN, spring	1
15	663-43126-00	PIN, upper shock mount	1	41	* 663-42510-01-F6	STEERING BRACKET ASS'Y (Short)	1
16	90560-25061	SPACER	2	*	663-42510-00-F6	STEERING BRACKET ASS'Y (Short)	1
17	90201-19427	WASHER (19.56-406-3mm)	2	*	663-42510-11-F6	STEERING BRACKET ASS'Y (Long)	1
18	90385-19008	BUSHING	4	*	663-42510-10-F6	STEERING BRACKET ASS'Y (Long)	1
19	663-43124-00	PIN, lower shock mount	2	42	90201-12426	WASHER (12.56-386-3mm)	4
20	90202-19059	WASHER (19.56-426-1.5mm)	2	43	95380-10600	NUT	8
21	90385-19007	BUSHING	4	44	* 90101-10M58	BOLT	4
22	90201-12426	WASHER (12.56-386-3mm)	4	*	90101-10209	BOLT	4
23	90109-12263	BOLT	4				
24	663-43125-00	COVER, shock mount	4				
25	98680-05015	SCREW, ovalhead	4				
26	* 697-43181-00	LEVER, tilt stop 1	1				
27	* 663-43181-02	LEVER, tilt stop 1	1				

▲ 558E S: 002490 and below  
 L: 311235 and below  
 ▲ 558E S: 002250 and below  
 L: 309808 and below  
 ▲ 558E S: 002491 and up  
 L: 311236 and up  
 ▲ 558E S: 002251 and up  
 L: 309809 and up  
 \* New parts number  
 \* Not shown

# Fig. 10 BRACKET 2 -'80/'81

# BRACKET 2 -'80/'81



Ref.No.	Parts No.	Description	Q'ty	Ref.No.	Parts No.	Description	Q'ty
1	93700-06004	NIPPLE, grease	3	26	95380-12800	NUT, crown	2
2	663-45119-00	CAP, grease nipple	3	27	687-44552-00-94	HOUSING, lower mount rubber 1	1
3	663-43145-00	CAP, clamp bracket	2	28	90501-14236	SPRING, compression	4
4	663-43318-00	COVER	2	29	97375-08025	BOLT	4
5	90206-10M08	WASHER, wave (10.56-186-3mm)	1	30	92990-08100	WASHER	4
6	91490-30025	PIN, cotter	2	31	663-44553-00-F6	COVER, lower mount	2
7	95390-08600	NUT	1	32	92380-06015	SCREW, cylinderhead	2
8	91590-08030	PIN, clevis	1	33	90179-06066	NUT	2
9	91490-20012	PIN, cotter	1	34	670-44514-00-94	MOUNT RUBBER, upper side 1	2
10	90269-03010	RIVET	1	35	663-44533-00	DAMPER, upper mount rubber	2
11	663-48511-00-F6	HOOK, steering	1	36	90109-08262	BOLT	2
12	90116-10175	BOLT, stud	2	37	90201-15423	WASHER (156-256-3mm)	2
13	90185-10051	NUT, self-locking	2	38	90202-15065	WASHER (156-256-4.9mm)	2
14	90201-30420	WASHER (30.56-506-2mm)	1	39	90201-09425	WASHER (9.56-256-3mm)	2
15	90386-30048	BUSHING	2	40	90185-08045	NUT, self-locking	2
16	93104-30048	OIL SEAL (50-306-406-6mm)	1	41	663-44511-00-94	COVER, upper mount rubber	1
17	90201-31418	WASHER (316-466-2mm)	1	42	97375-08035	BOLT	3
18	663-44551-01-F6	HOUSING, lower mount	1	43	92990-08100	WASHER	3
19	93410-28M01	CIRCLIP (S-286)	1	44	90201-22428	WASHER (22.56-376-0.5mm)	2
20	687-44555-00-94	MOUNT RUBBER, lower side	2	45	90185-22043	NUT, self-locking	1
21	90202-25M04	WASHER (256-356-4.9mm)	2	<b>STEERING GUIDE TYPE MECHANICAL STEERING</b>			
22	90201-13M19	WASHER (136-346-4mm)	2	46	663-48511-11-F6	HOOK, steering	1
23	90109-12261	BOLT	2				
24	663-44575-00	DAMPER, lower mount rubber 1	2				
25	90201-12M16	WASHER (12.86-22.56-3mm)	4				

Fig. 11 UPPER CASING -'80/'81

Ref.No.	Parts No.	Description	Q'ty
1	687-45111-00-F6	CASING, upper (Short 320mm)	1
*	687-45111-10-F6	CASING, upper (Long 442mm)	1
2	663-45127-00	SEAL, rubber	1
3	663-45129-00	HOOK, rubber seal	1
4	663-45155-00	CAP (Short)	1
*	663-45155-10	CAP (Long)	1
5	93606-12019	PIN, dowel B (66-12mm)	2
6	90101-08M00	BOLT	8
7	92990-08100	WASHER	8
■ 8	663-45113-01	GASKET, upper casing	1
9	663-41137-02-94	GUIDE, exhaust	1
10	90386-02M04	BUSHING	1
▲ 11	663-45114-02	GASKET, upper casing 2	1
12 *	663-14711-01-9M	MUFFLER 1 (Short 313mm)	1
*	663-14711-01-94	MUFFLER 1 (Short 313mm)	1
*	663-14711-11-9M	MUFFLER 1 (Long 402mm)	1
*	663-14711-11-94	MUFFLER 1 (Long 402mm)	1
13	90334-30017	PLUG, straight	1
14	663-14737-00	DAMPER, muffler (Short)	1
*	663-14737-10	DAMPER, muffler (Long)	1
15	663-45251-00	ANODE	1
16	92180-06025	SCREW, ovalhead	1
▲ 17	663-45123-00	GASKET, muffler	1
18	93606-12019	PIN, dowel B (66-12mm)	2
19 *	97395-08040	BOLT	1
*	97375-08040	BOLT	1
20	97375-08035	BOLT	1
21	97375-08030	BOLT	6
22	92990-08100	WASHER	8

- \* New parts number
- \* Not shown
- Contents of power head gasket kit (Parts No. 697-W0001-00)
- ▲ Contents of lower unit gasket kit (Parts No. 698-W0001-20)

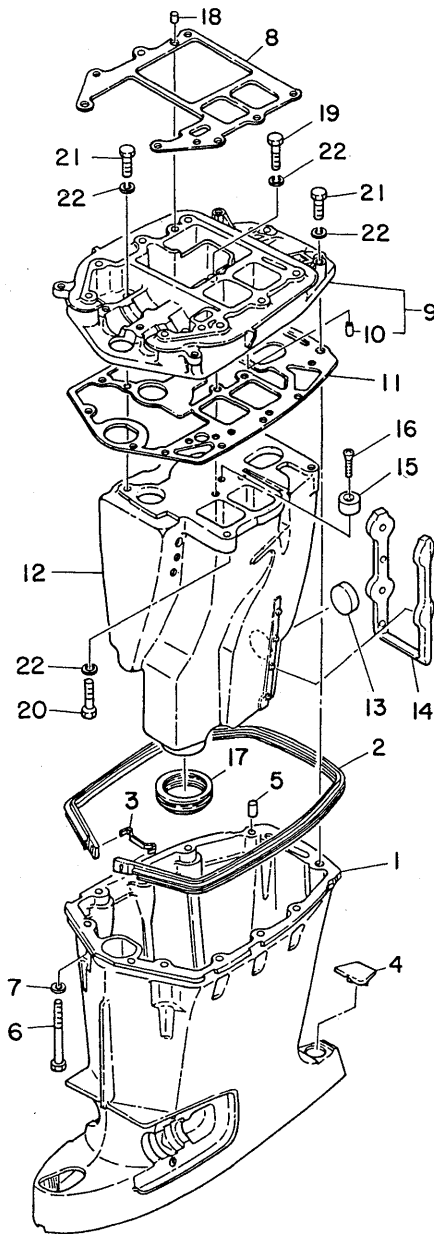


Fig. 12 LOWER & DRIVE I -'80/'81

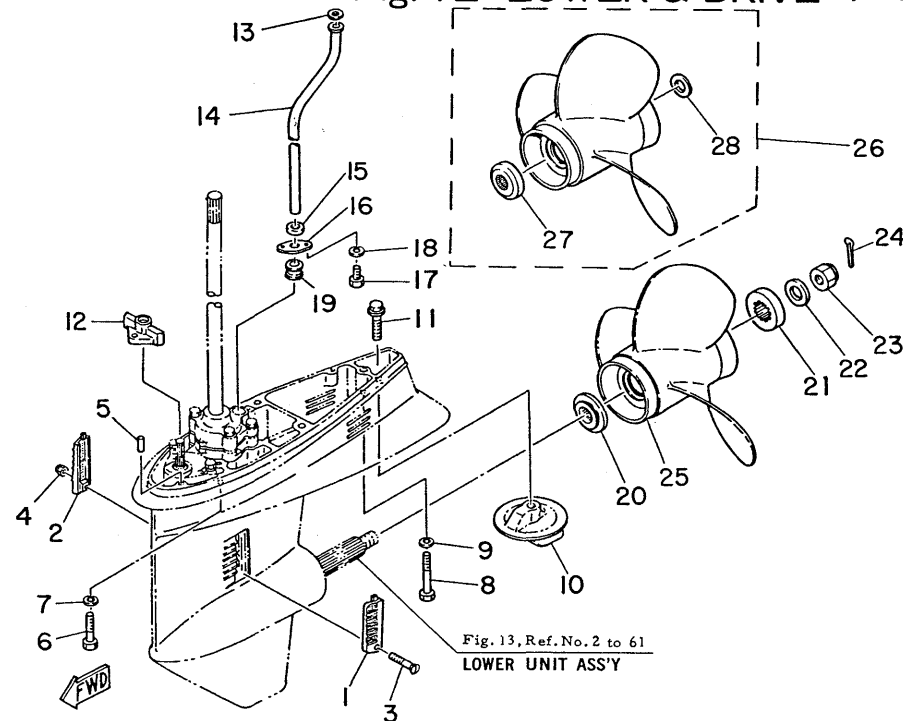


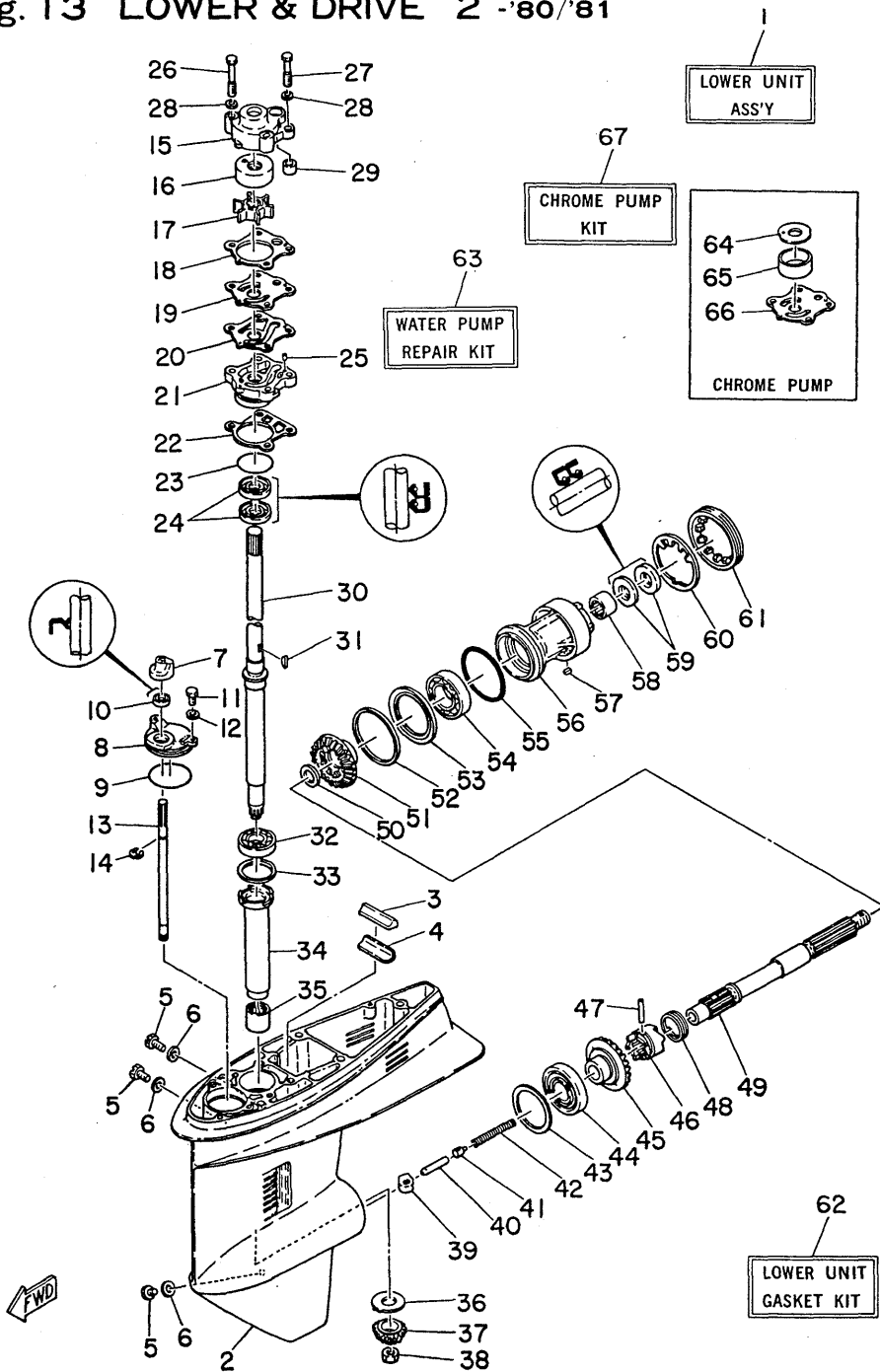
Fig. 13, Ref. No. 2 to 61  
LOWER UNIT ASS'Y

Ref.No.	Parts No.	Description	Q'ty	Ref.No.	Parts No.	Description	Q'ty
▷ 1 *	688-45214-01	COVER, water inlet 1	1	18	92990-06100	WASHER	2
△ *	688-45214-00	COVER, water inlet 1	1	19	663-44367-00	RUBBER, water seal 3	1
▷ 2 *	688-45215-01	COVER, water inlet 2	1	20	663-45987-01	SPACER 1	1
△ *	688-45215-00	COVER, water inlet 2	1	21	670-45997-01	SPACER 2	1
3	98180-05040	SCREW, ovalhead	1	22	92990-16200	WASHER	1
4	90185-05002	NUT, self-locking	1	23	90185-16M02	NUT, self-locking	1
5	93606-12019	PIN, dowel B (66-12mm)	2	24	91490-30025	PIN, cotter	1
6	97375-10040	BOLT	4	25	663-45941-01-36	PROPELLER ASS'Y 1 (3X10"x17"-G)	} U.R. 1
7	92990-10100	WASHER	4	663-45943-01-36	PROPELLER ASS'Y 2 (3X11"x15"-G)		
8 *	97395-08060	BOLT	1	663-45945-01-36	PROPELLER ASS'Y 3 (3X11"x13"-G)		
*	97375-08060	BOLT	1	663-45947-01-36	PROPELLER ASS'Y 4 (3X12"x11"-G)		
9	92990-08100	WASHER	1	663-45949-01-36	PROPELLER ASS'Y 5 (3X10"x16"-G)		
10	679-45371-00	TAB-TRIM	1	663-45952-01-36	PROPELLER ASS'Y 6 (3X11"x12"-G)		
11	90105-10M00	BOLT	1	663-45956-01-36	PROPELLER ASS'Y 8 (3X12"x9"-G)		
12	663-43662-00	GUIDE, reverse rod	1	663-45958-01-36	PROPELLER ASS'Y 9 (3X11"x14"-G)		
13	90202-12060	WASHER (126-18.56-2mm)	1	<b>STAINLESS STEEL PROPELLER</b>			
14	663-44361-00	TUBE, water (Short 306mm)	1	663-45970-60-98	PROPELLER ASS'Y 20 (3X11"x12"-G)		
*	663-44361-10	TUBE, water (Long 428mm)	1	663-45972-60-98	PROPELLER ASS'Y 21 (3X12"x11"-G)		
15	90430-12072	GASKET	1	663-45974-60-98	PROPELLER ASS'Y 22 (3X11"x13"-G)		
16	663-44373-00	SET PLATE, water tube	1	26	663-45976-00	PROPELLER ASS'Y 23 (3X10"x14"-G)	
17 *	97395-06012	BOLT	2	27	675-45987-02	SPACER 1	1
*	97375-06012	BOLT	2	28	90202-17M29	WASHER (176-316-1.5mm)	1

558E S. 002450 and below L. 310790 and below 558M L. 551105 and below 558E S. 002451 and up L. 310791 and up 558M S. 200101 and up L. 551106 and up

- \* New parts number
- \* Not shown

Fig. 13 LOWER & DRIVE 2 -'80/'81



LOWER & DRIVE 2 -'80/'81

Ref.No.	Parts No.	Description	Q'ty	Ref.No.	Parts No.	Description	Q'ty
1	697-45300-00-F6	LOWER UNIT ASS'Y (Short)	1S	34	663-45536-00	SLEEVE, drive shaft	1
		(Ref. No. 2 to 61)		35	93315-32224	BEARING, needle	1
*	697-45300-10-F6	LOWER UNIT ASS'Y (Long)	1S	36	663-45552-00	BEARING, plain	1
		(Ref. No. 2 to 61)		37 *	697-45551-00	PINION (13T)	1
2	663-45311-01-F6	CASING, lower	1	38	90170-12138	NUT	1
3	663-45375-00	SEAL, rubber 2	1	39	663-44151-00	CAM, shift	1
4	663-45376-00	GUIDE, seal rubber	1	40	688-45635-00	PLUNGER, shift	1
5	90340-08014	PLUG, straight	3	41	663-45634-00	SLIDE, shift	1
▲ 6	90430-08020	GASKET	3	42	90501-16233	SPRING, compression	1
7	663-44155-01	CAM, reverse rod	1	43	663-45567-00-05	SHIM 1 (576-64.56-0.05mm)	} U.R.
8	663-45321-00	PLATE	1	663-45567-00-08	SHIM 1 (576-64.56-0.08mm)		
▲ 9	93210-49046	O-RING (3.16-49.46)	1	663-45567-00-12	SHIM 1 (576-64.56-0.12mm)		
10	93106-09014	OIL SEAL (DD-96-196-5mm)	1	663-45567-00-30	SHIM 1 (576-64.56-0.30mm)		
11 *	97395-06016	BOLT	2	663-45567-00-50	SHIM 1 (576-64.56-0.50mm)		
*	97375-06016	BOLT	2	44	93332-00003	BEARING, taper roller	1
12	92990-06600	WASHER	2	45 *	697-45560-00	GEAR 1 ASS'Y (24T)	1
13	663-44144-01	ROD, shift 2	1	46	663-45631-01	CLUTCH, dog	1
14	93430-08006	CIRCLIP (E-86)	1	47	90250-06023	PIN, straight (6.356-33mm)	1
15	663-44311-02	HOUSING, water pump 1	1	48	663-45633-00	RING, cross pin	1
* 16	663-44322-00	INSERT, cartridge	1	49	697-45611-00	SHAFT, propeller	1
>★ 17 *	697-44352-00	IMPELLER	1	50	90201-22429	WASHER (22.56-26.56-2mm)	1
<★ *	663-44352-04	IMPELLER	1	51 *	697-45571-00	GEAR 2 (24T)	1
▲★ 18	663-44315-00	GASKET, water pump 1	1	52	663-45571-01	GEAR 2 (24T)	1
* 19	663-44323-00	OUTER PLATE, cartridge	1	53	663-45577-00-05	SHIM 2 (72.56-76.56-0.05mm)	} U.R.
▲★ 20	663-44324-00	GASKET, cartridge outer plate	1	663-45577-00-08	SHIM 2 (72.56-76.56-0.08mm)		
21	663-44341-00-94	HOUSING, water pump 2	1	663-45577-00-12	SHIM 2 (72.56-76.56-0.12mm)		
▲ 22	663-44316-00	GASKET, water pump 2	1	663-45577-00-30	SHIM 2 (72.56-76.56-0.30mm)		
▲ 23	93210-41042	O-RING (3.16-41.46)	1	663-45577-00-50	SHIM 2 (72.56-76.56-0.50mm)		
▲ 24	93101-23070	OIL SEAL (S-236-376-6mm)	2	54	663-45576-00	WASHER, thrust 2	1
25	93604-08062	PIN, dowel B (46-8mm)	2	55	93306-00702	BEARING (B6007)	1
★ 26 *	97395-08055	BOLT	2	56	663-45331-00-94	HOUSING, bearing	1
★ *	97375-08055	BOLT	2	57	90282-04010	KEY, straight	1
★ 27 *	97395-08045	BOLT	2	58	93317-22204	BEARING, needle	1
★ *	97375-08045	BOLT	2	59	93101-22067	OIL SEAL (S-226-366-6mm)	2
28	92990-08600	WASHER	4	60	90214-48008	WASHER, claw	1
★ 29	663-44366-00	RUBBER, water seal 2	1	61 *	697-45384-00	NUT	1
30	663-45510-01	DRIVE SHAFT ASS'Y (Short 652.5mm)	1	*	663-45384-00	NUT	1
*	663-45510-11	DRIVE SHAFT ASS'Y (Long 774.5mm)	1	62 *	698-W0001-20	LOWER UNIT GASKET KIT	1
>>★ 31 *	90280-03M03	KEY, woodruff	1	63 *	663-W0001-31	LOWER UNIT GASKET KIT	1
<<★ *	90280-03024	KEY, woodruff	1	64	663-W0078-00	WATER PUMP REPAIR KIT	1
32	93332-00001	BEARING, taper roller	1	65	670-44321-00	INNER PLATE, cartridge	1
33	663-45587-00-05	SHIM 3 (416-46.56-0.05mm)	} U.R.	66	670-44322-01	INSERT, cartridge	1
663-45587-00-08	SHIM 3 (416-46.56-0.08mm)	67		670-44323-00	OUTER PLATE, cartridge	1	
663-45587-00-12	SHIM 3 (416-46.56-0.12mm)			67	670-W0078-00	CHROME PUMP KIT	1
663-45587-00-30	SHIM 3 (416-46.56-0.30mm)						
663-45587-00-50	SHIM 3 (416-46.56-0.50mm)						

\* New parts number  
 \* Not shown  
 ▲ Contents of lower unit gasket kit  
 ★ Contents of water pump repair kit  
 ☆ Contents of chrome pump kit

△ [58B S: 001871 and below  
L: 305075 and below  
△ [58E S: 002450 and below  
L: 310790 and below  
△ [58E S: 002435 and below  
L: 310655 and below

58B S: 250840 and below  
L: 330076 and below  
58B S: 250720 and below  
L: 551105 and below  
58B S: 250720 and below  
L: 551075 and below

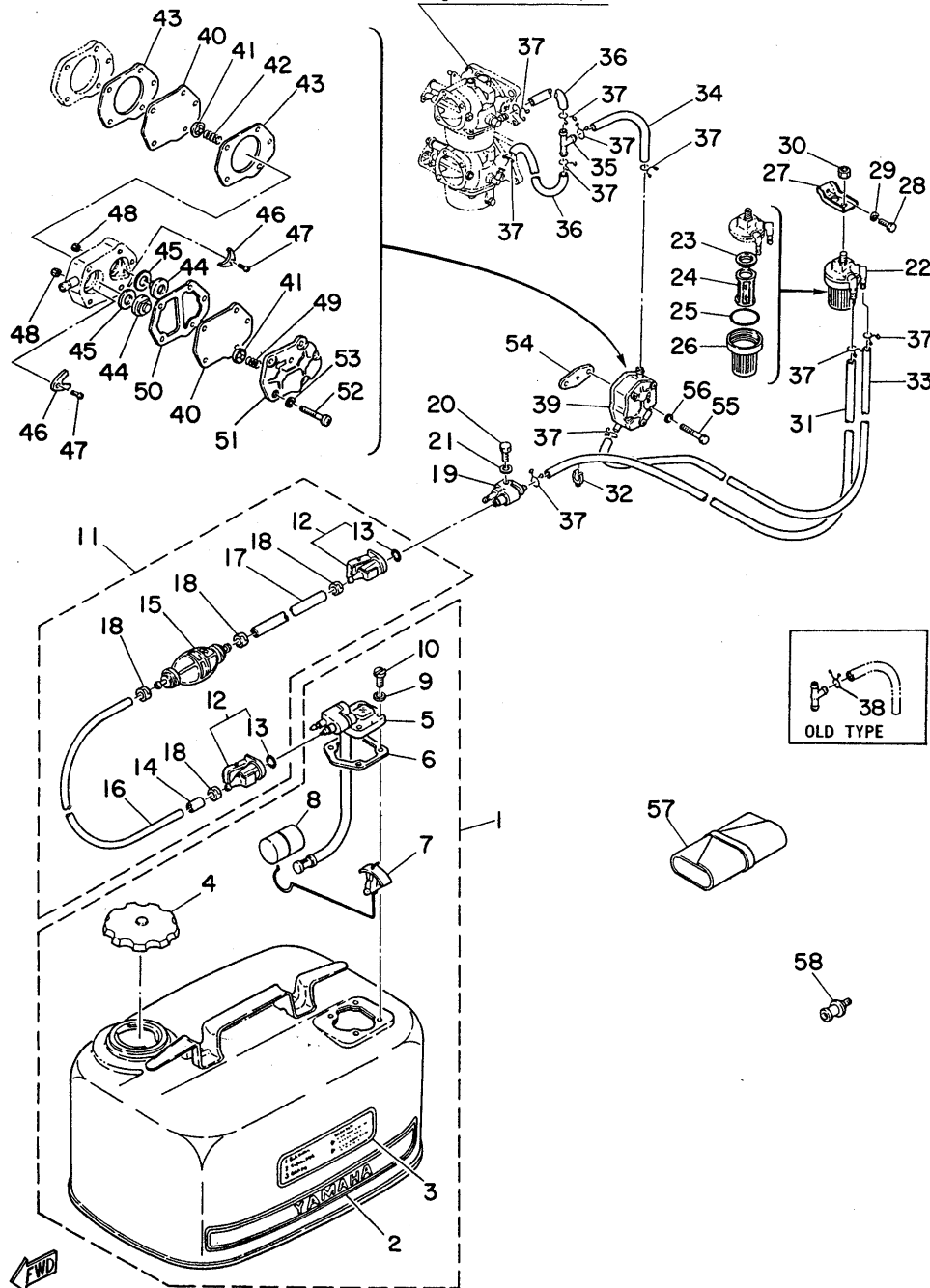
△ [58E S: 001872 and up  
L: 305076 and up  
> [58E S: 002451 and up  
L: 310791 and up  
>> [58E S: 002436 and up  
L: 310656 and up

58B S: 250841 and up  
L: 650961 and up  
58B S: 250721 and up  
L: 551106 and up  
58B S: 250721 and up  
L: 551076 and up

Fig. 14 FUEL SECTION '80/'81

FUEL SECTION '80/'81

Fig. 6, Ref. No. 35,36



Ref.No.	Parts No.	Description	Q'ty	Ref.No.	Parts No.	Description	Q'ty
1	664-24202-80-24	FUEL TANK ASS'Y	1	▽ 31 *	90445-09109	HOSE (56-96-400mm)	1
2	663-24244-00	GRAPHIC, side	2	△ *	90445-09280	HOSE (66-96-400mm)	1
3	663-24245-80	GRAPHIC	1	32	90464-04011	CLAMP, cord	1
4	802-24610-00	CAP ASS'Y	1	33	90445-09095	HOSE (56-96-215mm)	1
5	656-24275-03	FUEL METER COMP.	1	34	90445-10283	HOSE (66-106-170mm)	1
6	663-24268-00	GASKET, fuel meter housing	1	▽ 35 *	688-24378-00	PIPE, joint 1	1
7	656-24241-03	INDICATOR	1	△ *	807-24376-00	PIPE, joint 1	1
8	663-24264-00	FLOAT	1	36	90445-09061	HOSE (56-96-65mm)	2
9	630-24329-00	SEAL	4	▽ 37	90467-08004	CLIP	10
10	98380-05018	SCREW, cylinderhead	4	△ *	90467-08004	CLIP	9
11	663-24310-61	FUEL PIPE ASS'Y	1	△ 38	810-24357-00	CLIP	1
12	663-24305-01	FUEL PIPE JOINT COMP.	2	39	663-24410-00	FUEL PUMP ASS'Y	1
13	93210-08287	O-RING (36-8.06)	2	40	648-24411-00	DIAPHRAGM, pump	2
14	663-24397-00	COLLAR	1	41	648-24424-00	PLATE, spring guide	2
15	650-24360-01	PRIMARY PUMP ASS'Y	1	42	648-24423-00	SPRING, pump diaphragm	1
✦ 16	90445-12M04	HOSE (66-11.56-1900mm)	1	43	648-24434-00	GASKET, body 1	2
✦ 17	90445-12155	HOSE (66-11.56-1000mm)	1	44	648-24421-00	VALVE SUB-ASS'Y	2
18	650-24351-00	BAND, fuel pipe	4	45	648-24431-00	GASKET	2
19	655-24304-01	FUEL PIPE JOINT COMP. 1	1	46	648-24422-01	PLATE	2
20	97313-06020	BOLT	1	47	98503-03008	SCREW, panhead	2
21	92990-06100	WASHER	1	48	95313-03600	NUT	2
22	655-24560-00	FILTER ASS'Y	1	49	648-24454-00	SPRING	1
■ 23	655-24564-00	PACKING, filter	1	50	648-24435-02	GASKET, body 2	1
24	655-24563-00	ELEMENT, filter	1	51	648-24413-01	COVER, pump	1
■ 25	93210-37M25	O-RING (2.06-36.56)	1	52	98503-05028	SCREW, panhead	3
26	655-24521-00	CUP, filter	1	53	92990-05100	WASHER	3
27	648-24566-01	BRACKET, filter	1	■ 54	650-24431-00	GASKET, fuel pump	1
28	97313-06014	BOLT	1	55	97313-06040	BOLT	2
29	92903-06100	WASHER	1	56	92903-06200	WASHER	2
30	95303-08600	NUT	1	57	670-28100-60	TOOL ASS'Y	1
				58	626-28193-01-94	PLUG, water check 1	1

△ [55BE S: 002470 and below  
L: 310975 and below

55BM S: 250745 and below  
L: 551115 and below

▽ [55BE S: 002471 and up  
L: 310976 and up

55BM S: 250746 and up  
L: 551116 and up

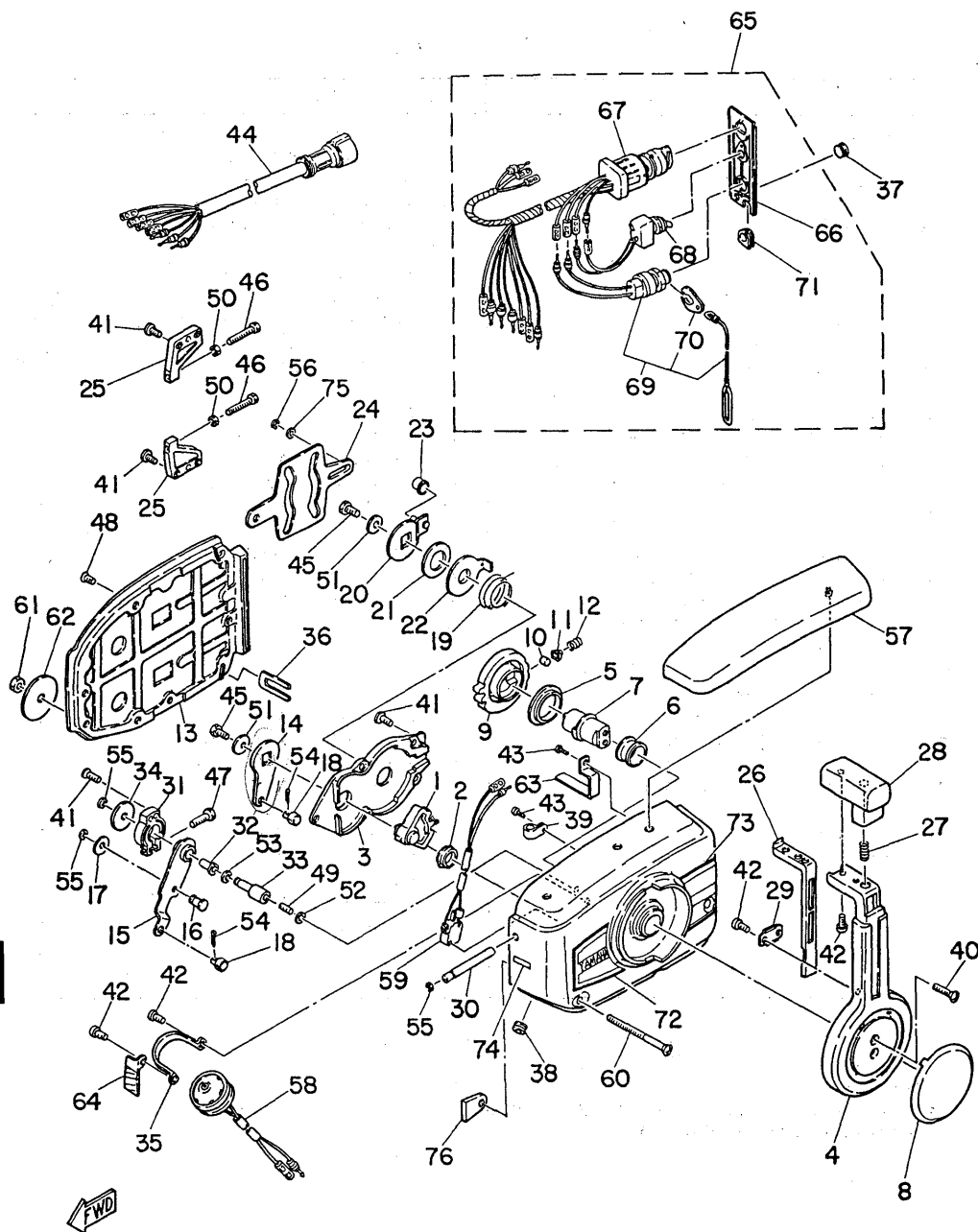
\* New parts number

※ Not shown

■ Contents of power head gasket kit (Parts No. 697-W0001-00)

✦ Also available in 30m rolls (Parts No. 90890-56878)

Fig. 15 REMOTE CONTROL ASS'Y -'80/'81



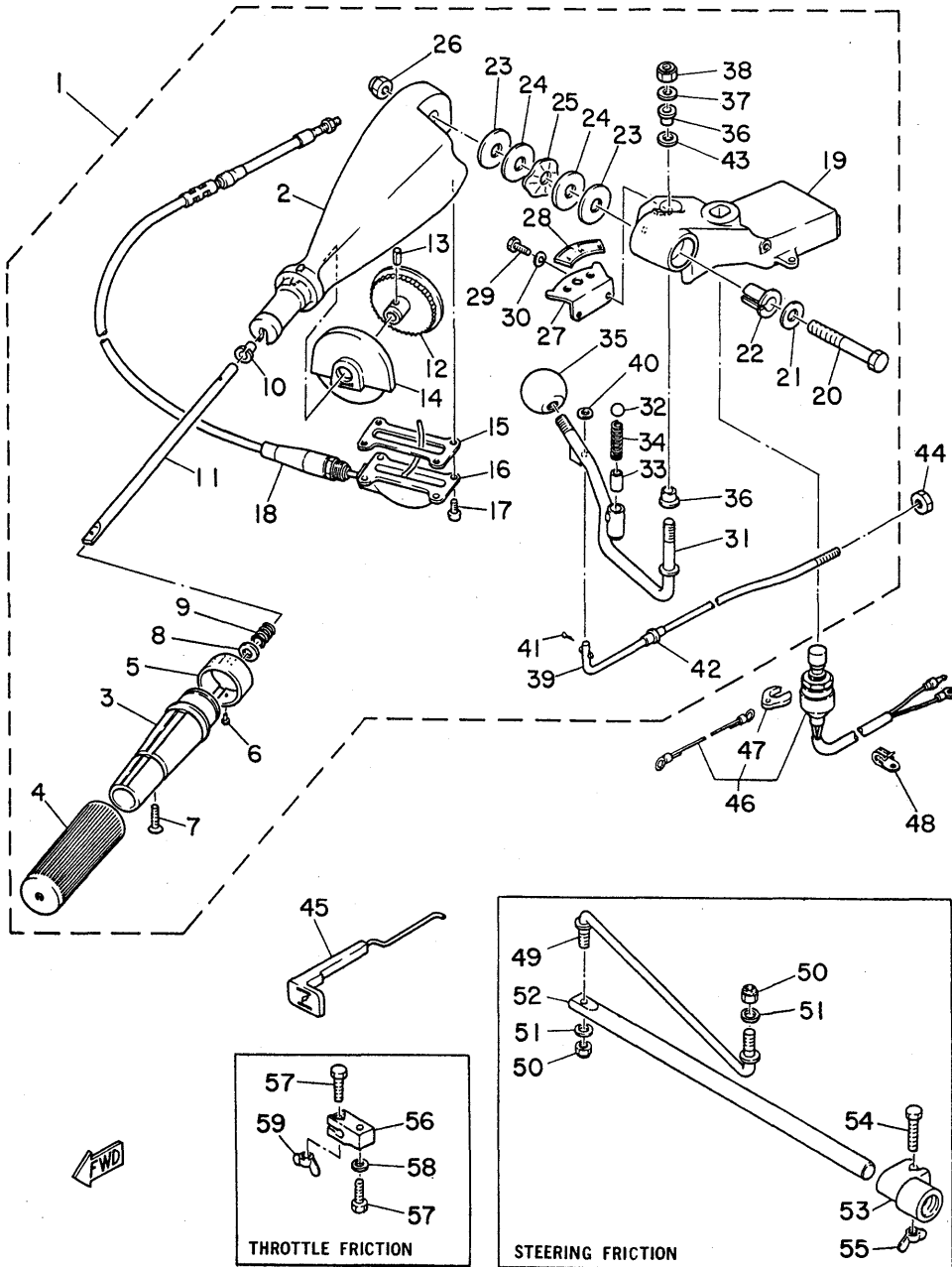
REMOTE CONTROL ASS'Y -'80/'81

Ref.No.	Parts No.	Description	Q'ty	Ref.No.	Parts No.	Description	Q'ty
*	702-48230-10	REMOTE CONTROL ASS'Y (See Fig. 1, Ref. No. 1)	1	38	702-48285-00	GROMMET 2	1
*	702-48240-10	REMOTE CONTROL ASS'Y (See Fig. 1, Ref. No. 2)	1	39	702-82594-00	CLAMP	1
1	702-48233-00	GEAR 2	1	40	92780-06025	SCREW, flathead	2
2	702-48235-00	BUSHING 2	1	41	702-48281-00	SCREW 1	11
3	702-48231-00	HOUSING, gear	1	42	702-48282-00	SCREW 2	6
4	702-48221-00	LEVER, control	1	43	702-48283-00	SCREW 3	3
5	702-48234-00	BUSHING 1	1	44	688-82586-20	EXTENSION, wire harness	1
6	702-48243-00	BUSHING 3	1	45	97380-06014	BOLT	2
7	702-48242-00	SHAFT, drive	1	46	97380-05035	BOLT	2
8	702-48225-00	COVER	1	47	97380-05025	BOLT	1
9	702-48232-00	GEAR 1	1	48	92780-06014	SCREW, flathead	5
10	702-48236-00	ROLLER, detent	1	49	702-48267-00	BOLT, set	1
11	702-48237-00	ADAPTOR, detent	1	50	95380-05600	NUT	2
12	702-48238-00	SPRING, detent	1	51	702-48247-00	WASHER, lock 1	2
13	702-48213-00	BACK PLATE	1	52	92990-06300	WASHER, tooth	1
14	702-48271-00	ARM, shift	1	53	92990-08600	WASHER	1
15	702-48261-00	ARM, throttle	1	54	91490-25012	PIN, cotter	2
16	702-48269-00	SET PIN, arm	1	55	93430-06024	CIRCLIP (E-66)	3
17	702-48268-00	SPACER 3	1	56	93430-04M01	CIRCLIP (E-46)	1
18	702-48345-00	CABLE END, remote control 2	2	57	702-48214-00	PAD (Right)	1
19	702-48244-00	SPRING, free accel.	1	*	702-48214-10	PAD (Left)	1
20	702-48241-00	ARM, drive	1	58	688-83383-00	BUZZER	1
21	702-48246-00	SPACER 1	1	59	688-82540-00	NEUTRAL SWITCH ASS'Y	1
22	702-48245-00	PLATE, lock	1	60	92680-06090	SCREW, ovalhead	3
23	702-48252-00	ROLLER, cam	1	61	95380-06600	NUT	3
24	702-48251-00	PLATE, cam (Right)	1	62	702-48287-00	WASHER 1	3
*	702-48251-10	PLATE, cam (Left)	1	63	702-82581-00	STAY, cord clamp	2
25	702-48254-00	STOPPER, throttle adjusting	2	64	702-82589-00	PROTECTOR, wire harness	1
26	702-48223-00	LOCK, neutral	1	65	688-82570-20	SWITCH PANEL ASS'Y	1
27	702-48227-00	SPRING, neutral lock	1	66	688-82571-20	SWITCH PANEL	1
28	702-48222-00	GRIP, control lever	1	67	688-82508-10	MAIN SWITCH ASS'Y	1
29	702-48226-00	PLATE, stopper	1	68	688-82574-00	SWITCH, choke	1
30	702-48265-00	SHAFT, friction	1	69	688-82575-00	KILL SWITCH ASS'Y	1
31	702-48264-00	FRICITION, throttle	1	70	663-82556-70	STOPPER	1
32	702-48263-00	BUSHING 4	1	71	688-82535-10	GROMMET	1
33	702-48262-00	SHAFT, throttle	1	72	702-48215-00	GRAPHIC 1 (Right)	1
34	702-48266-00	SPACER 2	1	*	702-48215-10	GRAPHIC 1 (Left)	1
35	702-83386-00	STAY, buzzer	1	73	702-48216-00	GRAPHIC 2 (Right)	1
36	702-48352-00	ANCHOR, cable 1	1	*	702-48216-10	GRAPHIC 2 (Left)	1
37	702-48284-00	GROMMET 1	1	74	702-48217-00	MARK 1	1
				75	702-48288-00	WASHER	1
				76	702-82598-00	GROMMET	1

\* Not shown

Fig. 16 MANUAL STEERING  
(55BM MODEL) -'80/'81

MANUAL STEERING (55BM MODEL) -'80/'81



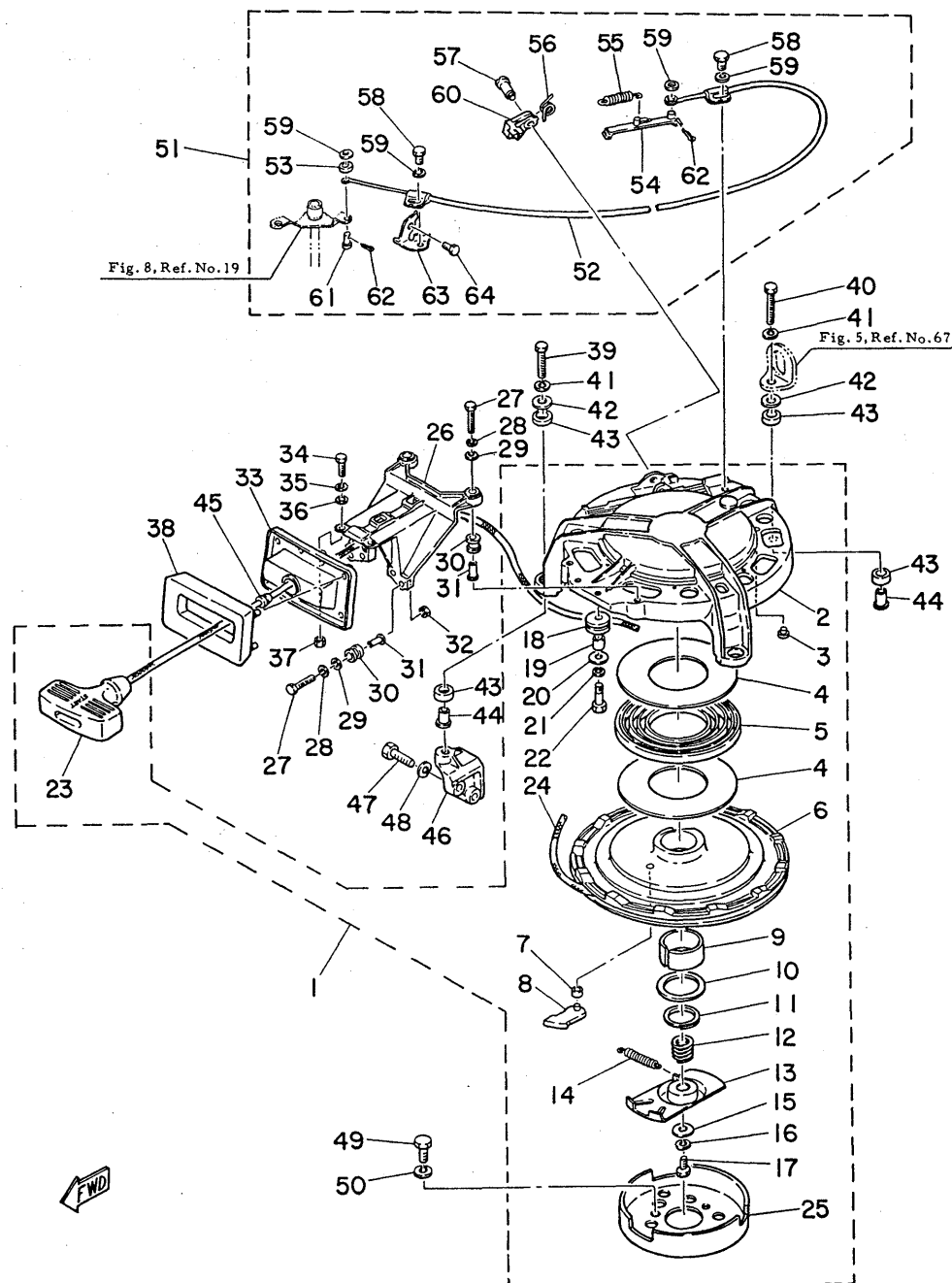
Ref.No.	Parts No.	Description	Q'ty	Ref.No.	Parts No.	Description	Q'ty
1	697-W0084-00-F6	HANDLE STEERING ASS'Y	1	33	90387-12M30	COLLAR	1
2	663-42111-00-F6	HANDLE, steering	1	34	90501-16M17	SPRING, compression	1
3	664-42119-00	GRIP, steering handle	1	35	663-44173-00	LEVER, shift control	1
4	689-42177-00	RUBBER, handle 1	1	36	90386-10009	BUSHING	2
5 *	697-42137-00	INDICATOR, throttle	1	37	90201-10120	WASHER (10.5φ-16.5φ-2.0mm)	1
*	663-42137-00	INDICATOR, throttle	1	38	90185-10051	NUT, self-locking	1
6	90269-02001	RIVET	1	39	663-42164-00	ROD, manual shift	1
7	98180-05025	SCREW, ovalhead	1	40	92990-06600	WASHER	1
8	92903-10600	WASHER	1	41	91490-25012	PIN, cotter	1
9	90501-23215	SPRING, compression	1	42	90386-06088	BUSHING	1
10	90386-08032	BUSHING	1	43	90201-12M34	WASHER	1
11	663-42115-00	SHAFT, steering handle	1	44	700-48339-00	NUT, cable end	1
12	663-42138-00	LEVER, throttle	1	45	663-41256-41	ROD, choke link	1
13	91690-30216	PIN, spring	1	46 *	689-82575-11	KILL SWITCH ASS'Y	1
14	663-42135-01	HOUSING, throttle lever	1	*	689-82575-10	KILL SWITCH ASS'Y	1
15	663-42133-00	GASKET	1	47	663-82556-70	STOPPER	1
16	663-42134-00-94	COVER, throttle lever	1	48	90465-06038	CLAMP, cord 2	1
17 *	97890-05012	SCREW, cylinderhead	4			<b>STEERING FRICTION</b>	
*	98380-05012	SCREW, cylinderhead	4	49 *	697-42515-00	ROD, steering link	1
18 *	692-26301-00	THROTTLE WIRE ASS'Y	1	*	663-42515-00	ROD, steering link	1
*	663-26301-00	THROTTLE WIRE ASS'Y	1				
19	697-42121-00-F6	BRACKET	1	50	90185-08057	NUT, self-locking	2
20	90101-12261	BOLT	1	51	92990-08600	WASHER	2
21	92990-12200	WASHER	1	52	663-42518-00	SHAFT, friction	1
22	90386-12089	BUSHING	1	53	663-42528-00	PIECE, friction	1
				54 *	97395-06035	BOLT	1
23	90202-12092	WASHER (12.5φ-36φ-1mm)	2				
24	90201-12537	WASHER (12.5φ-36φ-1mm)	2	*	90101-06M06	BOLT	1
25	90206-12054	WASHER, wave (12.2φ-36φ-1mm)	1	55	90175-06003	NUT, wing	1
26	90185-12058	NUT, self-locking	1			<b>THROTTLE FRICTION</b>	
27	697-44113-00	CAM PLATE, handle	1	56	663-42126-00	FRICTION, steering handle grip	1
				57 *	97395-06025	BOLT	2
28	663-44191-02	INDICATOR, shift	1	*	97375-06025	BOLT	2
29	97313-06016	BOLT	2				
30	92903-06100	WASHER	2	58	92990-06600	WASHER	1
31	697-44159-00	HANDLE, gear shift 2	1	59	90175-06003	NUT, wing	1
32	93515-32M01	BALL (15/32")	1				

The following parts are not used when using the manual starter.

1-1	702-48230-10	REMOTE CONTROL ASS'Y	1	6-31	663-41256-01	ROD, choke link	1
1-3	701-48310-90	CABLE, remote control 11F	2	7-1	697-82590-10	WIRE HARNESS ASS'Y	1
				10-11	663-48511-00-F6	HOOK, steering	1

\* New parts number  
\* Not shown

Fig. 17 MANUAL STARTER 1  
(55BM MODEL) -'80/'81



MANUAL STARTER 1  
(55BM MODEL) -'80/'81

Ref.No.	Parts No.	Description	Q'ty	Ref.No.	Parts No.	Description	Q'ty
1	663-15710-05	STARTER ASS'Y	1	35	92903-06100	WASHER	2
2	663-15711-02	CASE, starter	1	36	92903-06200	WASHER	2
3	648-15773-00	STAY 3	6	37	95303-06600	NUT	2
4	663-15739-00	WASHER, thrust 2	2	38	697-15762-00	SEAL, rubber 2	1
5	663-15713-00	SPRING, starter	1	39	97313-08035	BOLT	2
6	663-15714-01	DRUM, sheave	1	40	97313-08040	BOLT	1
7	663-15764-00	COLLAR	1	41	92903-08100	WASHER	3
8	663-15741-01	PAWL, drive	1	42	90201-08095	WASHER (8.56-186-1.2mm)	3
9	663-15754-00	BUSHING	1	43 *	90385-12M02	BUSHING	6
10	663-15726-01	WASHER, flat 1	1	* 90385-12024	BUSHING	6	
11	663-15744-00	CIRCLIP	1	44	90387-08M05	COLLAR	3
12	663-15715-00	SPRING, drive plate	1	45	697-15789-00	DAMPER	1
13	663-15716-01	DRIVE PLATE	1	46	663-15771-00-94	STAY 1	1
14	663-15734-01	SPRING, return	1	47	97313-08030	BOLT	2
15	663-15719-00	WASHER, thrust	1	48	92903-08100	WASHER	2
16	92903-06100	WASHER	1	49 *	97313-08018	BOLT	3
17	97303-06016	BOLT	1	* 97313-08020	BOLT	3	
18	663-15752-00	ROLLER, wire	1	50	92903-08100	WASHER	3
19	663-15753-00	BUSHING 1	1	51	697-W0079-00	SAFETY STARTER KIT	15
20	663-15791-00	WASHER	1	52	697-15770-00	WIRE COMP., starter stop	1
21	92903-06100	WASHER	1	53	663-15736-00	RING, retaining	1
22	97303-06025	BOLT	1	54	663-15735-01	GUIDE, cam	1
23	619-15755-01	HANDLE, starter	1	55	90506-09123	SPRING, tension	1
24	+	WIRE (2300mm)	1	56	90508-12015	SPRING, torsion	1
25	663-15723-01	PULLEY, starter	1	57	90149-05095	SCREW	1
26	697-15787-00-94	STAY	1	58	97313-06010	BOLT	2
27	97313-06030	BOLT	4	59	92903-06200	WASHER	4
28	92903-06100	WASHER	4	60	663-15794-00	STOPPER	1
29	92903-06200	WASHER	4	61	91503-06014	PIN, clevis	1
30	663-82317-00	DAMPER	4	62	91490-16012	PIN, cotter	2
31	624-42542-00	PIPE 1	4	63	663-15772-01	STAY 2	1
32	95303-06600	NUT	2	64	97313-08012	BOLT	1
33	697-15758-00-94	GUIDE, wire	1				
34	97313-06020	BOLT	2				

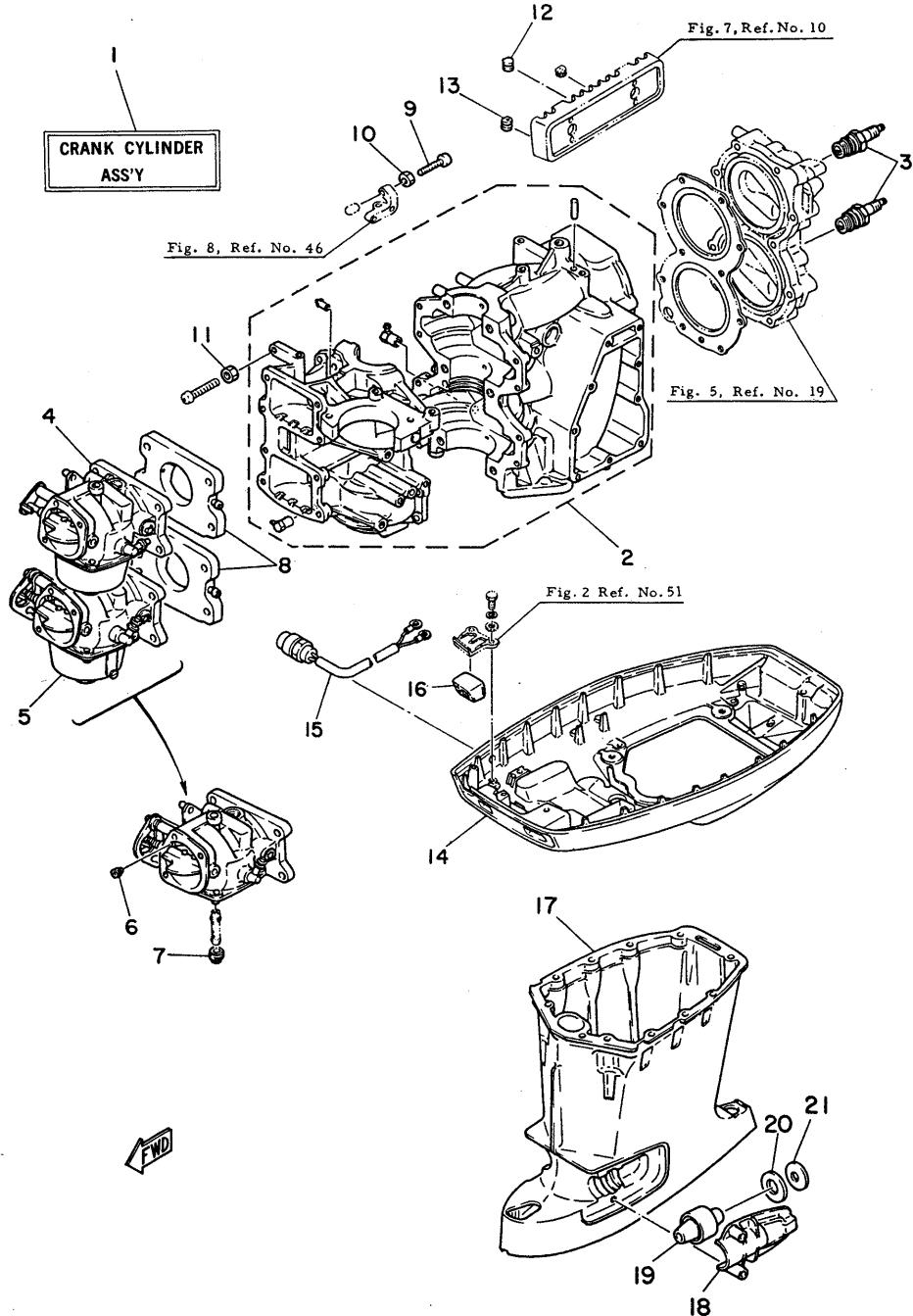
The following parts are not used when using the manual starter.

3-1	697-81800-11	ELECTRIC MOTOR ASS'Y	1	3-24	92903-08600	WASHER	2
3-20	663-81842-00-94	COVER 3	1	3-25	663-81162-00	WASHER, plain	U.R.
3-21	97313-08040	BOLT	2	3-26	97313-08016	BOLT	1
3-22	97313-08025	BOLT	1	3-27	92903-08100	WASHER	1
3-23	92903-08100	WASHER	3				

\* New parts number  
\* Not shown  
+ Cut from 50m roll, Parts No. 90890-44374, cutting length 2.3m.



Fig. 18 MANUAL STARTER 2  
(55BM MODEL) -'80/'81



MANUAL STARTER 2  
(55BM MODEL) -'80/'81

Ref.No.	Parts No.	Description	Q'ty	Ref.No.	Parts No.	Description	Q'ty
1	697-W0090-10	CRANK CYLINDER ASS'Y	1	14	697-42711-80-F6	COWLING, bottom	1
2	697-15100-10-94	CRANKCASE ASS'Y	1	15 *	697-82550-11	STOP SWITCH ASS'Y	1
3	94701-00041	PLUG, spark (8-8HS) NGK	2	* 697-82550-10	STOP SWITCH ASS'Y	1	A
▶ 4 *	6A3-14501-01	CARBURETOR ASS'Y (Upper)	1	16	663-42725-11	GROMMET	1
◀ *	6A3-14501-00	CARBURETOR ASS'Y (Upper)	1	17 *	697-45111-00-F6	CASING, upper (Upper 320mm)	1
▶ 5 *	6A3-14502-01	CARBURETOR ASS'Y (Lower)	1	*	663-45111-02-F6	CASING, upper (Upper 320mm)	1
◀ *	6A3-14502-00	CARBURETOR ASS'Y (Lower)	1	* *	697-45111-10-F6	CASING, upper (Long 442mm)	1
6	663-14945-38	AIR JET, main (#155)	2	*	663-45111-12-F6	CASING, upper (Long 442mm)	1
7	663-14943-41	JET, main (#170)	2	18	663-44552-00-94	HOUSING, lower mount rubber	2
8	670-13641-01-94	MANIFOLD, intake	2	19	670-44555-00-94	MOUNT RUBBER, lower side	2
9	90157-06014	SCREW	1	20	90202-21100	WASHER (216-356-4.9mm)	2
10	90170-06249	NUT	1	21	90201-13421	WASHER (136-336-3mm)	2
11	95303-06700	NUT	1				
12	90480-06157	GROMMET	3				
13	663-81922-00	GROMMET 1	1				

The following parts are not used when using the manual starter.

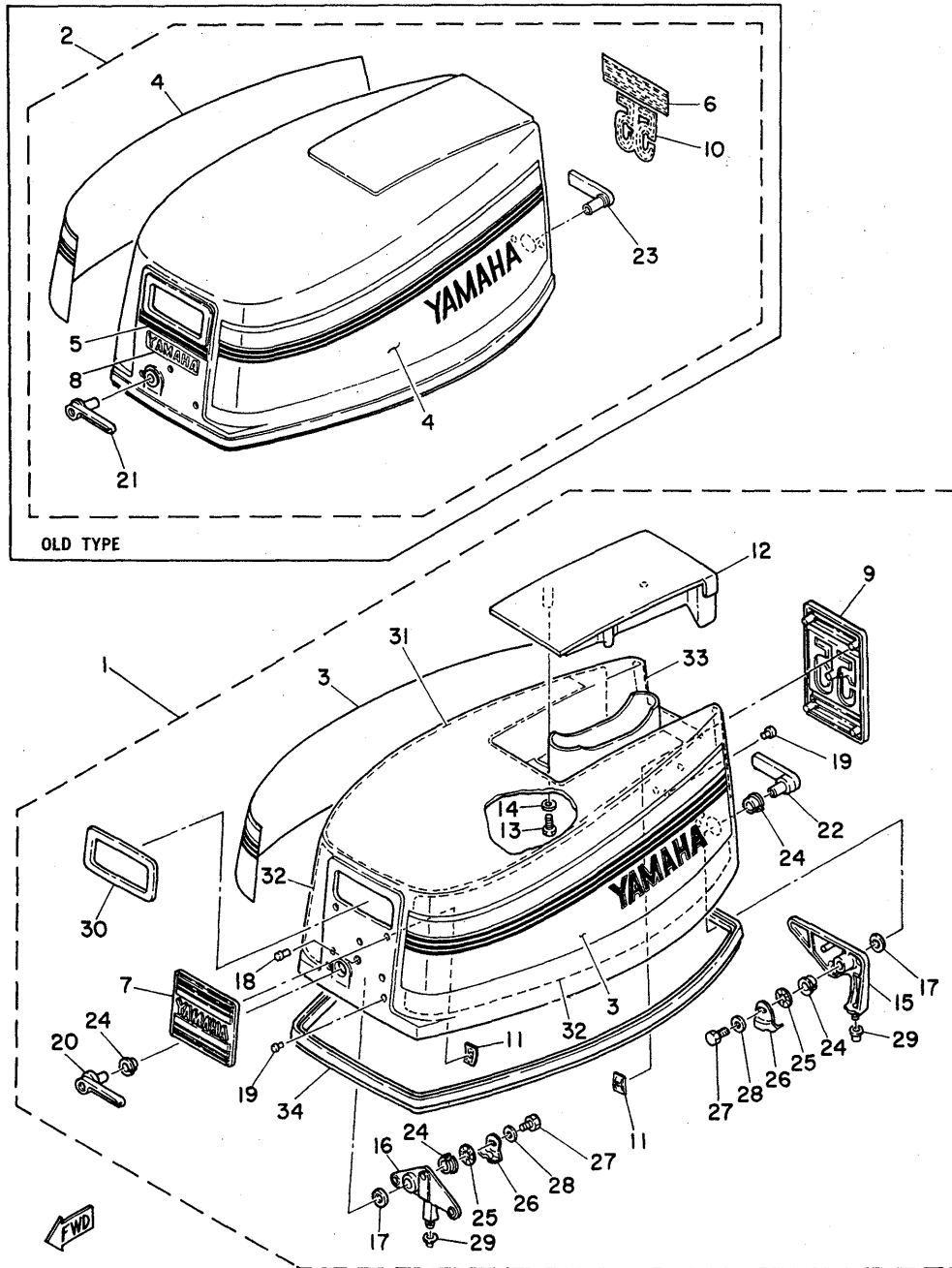
2-36	697-42711-00-F6	COWLING, bottom	1	6-38	663-14945-32	AIR JET, main (#125)	2
2-39	663-82594-02	CLAMP	1	6-50	663-14943-39	JET, main (#60)	2
2-50	663-42725-00	GROMMET 2	1	7-1	697-82590-10	WIRE HARNESS ASS'Y	1
5-1	697-W0090-00	CRANK CYLINDER ASS'Y	1	7-2	697-82105-11	WIRE, lead	1
5-2	697-15100-00-94	CRANKCASE ASS'Y	1	7-3	697-81971-00	WIRE, lead	1
5-41	94701-00160	PLUG, spark (8-8HS 10) NGK	2	7-15	90480-06066	GROMMET	1
5-68	97313-08025	BOLT	1	7-30	664-81970-60	RECTIFIER ASS'Y	1
5-69	92903-08100	WASHER	1	7-31	97803-05030	SCREW, panhead	1
6-5	663-83621-00	MARK 1	1	7-32	92903-05100	WASHER	1
6-10	663-86110-02	SOLENOID COIL ASS'Y	1	7-36	682-82150-10	FUSE HOLDER ASS'Y	1
6-11	91690-30010	PIN, spring	1	7-42	697-82594-00	CLAMP	1
6-12	676-86117-00	HOOK, wire pull	1	7-43	97303-08016	BOLT	1
6-13	663-86116-01	WIRE, pull	1	7-44	92903-08600	WASHER	1
6-14	93210-03261	O-RING	1	8-50	90157-06013	SCREW	1
6-15	663-86115-00	HOLDER, solenoid	1	8-52	95303-06700	NUT	2
6-16	663-86118-00	DAMPER	1	10-20	687-44555-00-94	MOUNT RUBBER, lower side	2
6-17	97803-05030	SCREW, panhead	2	10-21	90202-25M04	WASHER	2
6-19	663-13641-02-94	MANIFOLD, intake 1	2	10-22	90201-13M19	WASHER	2
6-22	663-24321-00	HOSE	1	10-27	687-44552-00-94	HOUSING, lower mount rubber	1
6-23	90467-08004	CLIP, pipe	2	11-1	687-45111-00-F6	CASING, upper (Short)	1
6-35	697-14501-02	CARBURETOR ASS'Y (Upper)	1	*	687-45111-10-F6	CASING, upper (Long)	1
6-36	697-14502-02	CARBURETOR ASS'Y (Lower)	1	11-14	663-14737-00	DAMPER, muffler (Short)	1
				*	663-14737-10	DAMPER, muffler (Long)	1

← (55BM S. 250785 and below  
L. 551150 and below

→ (55BM S. 250786 and up  
L. 551151 and up

\* New parts number  
\* Not shown

Fig. 19 MANUAL STARTER 3  
(55BM MODEL) '80/'81



MANUAL STARTER 3  
(55BM MODEL) '80/'81

Ref.No.	Parts No.	Description	Q'ty	Ref.No.	Parts No.	Description	Q'ty
▶ 1 *	697-42610-91-F6	TOP COWLING ASS'Y	1	▶ 20 *	697-42815-10-98	LEVER, clamp 1	1
▶ 2	697-42610-90-F6	TOP COWLING ASS'Y	1	▶ 21	697-42815-00-94	LEVER, clamp 1	1
▶ 3 *	697-W0070-11	GRAPHIC SIDE SET	15	▶ 22 *	697-42817-10-98	LEVER, clamp 3	1
▶ 4	697-W0070-10	GRAPHIC SIDE SET	15	▶ 23	697-42817-00-94	LEVER, clamp 3	1
▶ 5	697-42677-10	GRAPHIC, front	1	24	90386-13057	BUSHING	4
▶ 6	697-42678-10	GRAPHIC, rear	1	25	90206-13019	WASHER, wave (13.5φ-22φ-0.5mm)	2
▶ 7 *	697-42686-10	EMBLEM, front	1	26	663-42816-02	LEVER, clamp 2	2
▶ 8	697-42686-00	EMBLEM, front	1	27	97313-06012	BOLT	2
▶ 9 *	697-42687-20	EMBLEM, rear	1	28	90201-06068	WASHER (6.5φ-20φ-2.0mm)	2
▶ 10	697-42687-10	EMBLEM, rear	1	29	663-42662-00	DAMPER 1	2
▶ 11 *	90183-05M01	NUT, speed	10	30	697-15761-00	SEAL, rubber 1	1
12	697-42613-10-F6	MOLDING, air duct	1	31	697-42617-00	RUBBER, form 1	1
13	97313-06016	BOLT	4	32	697-42619-00	RUBBER, form 2	2
14	92903-06600	WASHER	4	33	697-42637-00	RUBBER, form 4	1
15	697-42647-00-94	HOLDER, clamp band 1	1	34	663-42615-02	SEAL	1
16	697-42649-00-94	HOLDER, clamp band 2	1				
17	90202-19M10	WASHER (19φ-25φ-3mm)	2				
18	90266-06M02	RIVET	1				
19	90266-06009	RIVET	6				

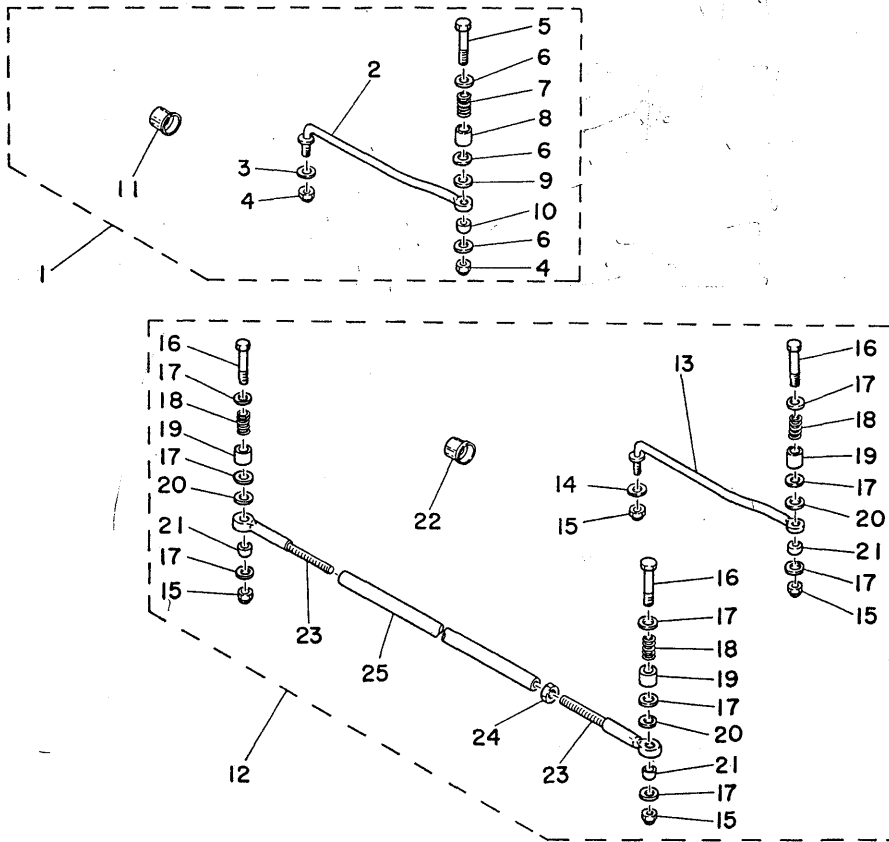
The following parts are not used when using the manual starter.

2-1	697-42610-81-F6	TOP COWLING ASS'Y	1
-----	-----------------	-------------------	---

◀ (55BM S. 250785 and below  
L. 551150 and below) ▶ (55BM S. 250786 and up  
L. 551151 and up)

\* New parts number

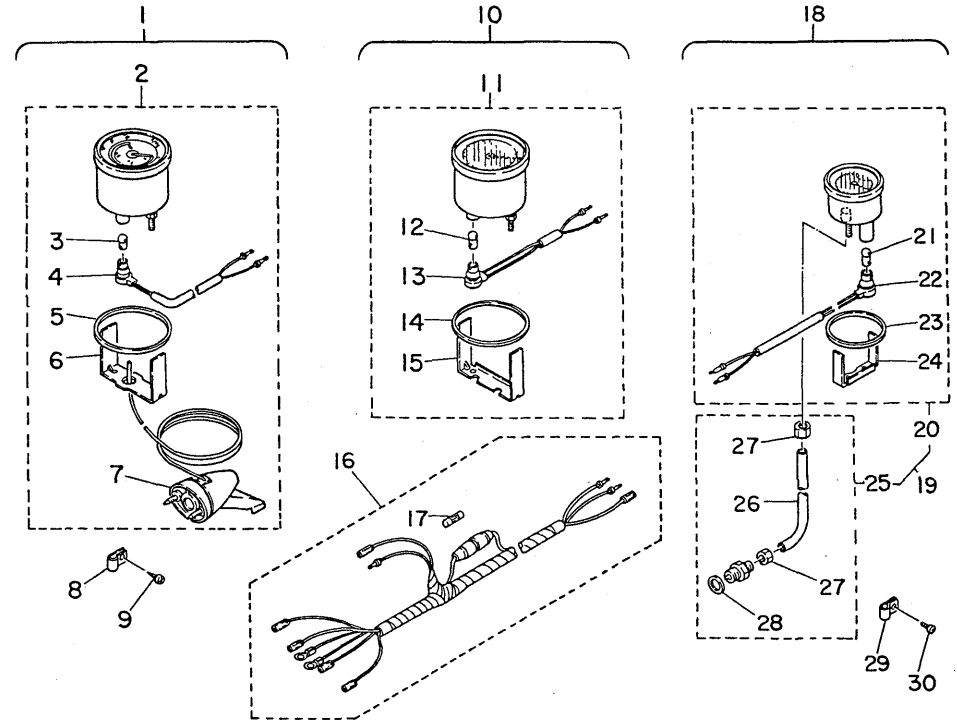
Fig. 20 STEERING GUIDE ATTACHMENT -'80/'81



Ref.No.	Parts No.	Description	Q'ty	Ref.No.	Parts No.	Description	Q'ty
1	663-61350-01	STEERING GUIDE ATTACHMENT KIT (Single)	15	13	663-61351-01	ROD, steering link	1
2	663-61351-01	ROD, steering link	1	14	90201-10M20	WASHER (9.76-166-1.5mm)	1
3	90201-10M20	WASHER (9.76-166-1.5mm)	1	15	90185-09M01	NUT, self-locking	4
4	90185-09M01	NUT, self-locking	2	16	90101-10M39	BOLT	3
5	90101-10M39	BOLT	1	17	90201-10M17	WASHER (9.76-216-1.5mm)	9
6	90201-10M17	WASHER (9.76-216-1.5mm)	3	18	90501-11M10	SPRING, compression	3
7	90501-11M10	SPRING, compression	1	19	90385-12M00	BUSHING, rubber	3
8	90385-12M00	BUSHING, rubber	1	20	90202-10M05	WASHER (9.76-216-0.8mm)	3
9	90202-10M05	WASHER (9.76-216-0.8mm)	1	21	663-61352-01	BALL, joint	3
10	663-61352-01	BALL, joint	1	22	663-43145-11	CAP, clamp bracket	1
11	663-43145-11	CAP, clamp bracket	1	23	663-61353-01	EYE, steering	2
12	663-61350-51	STEERING GUIDE ATTACHMENT KIT (Twin)	15	24	90170-11M00	NUT	1
				25 *	663-61311-01	TIE BAR	1
				*	663-61311-00	TIE BAR	1

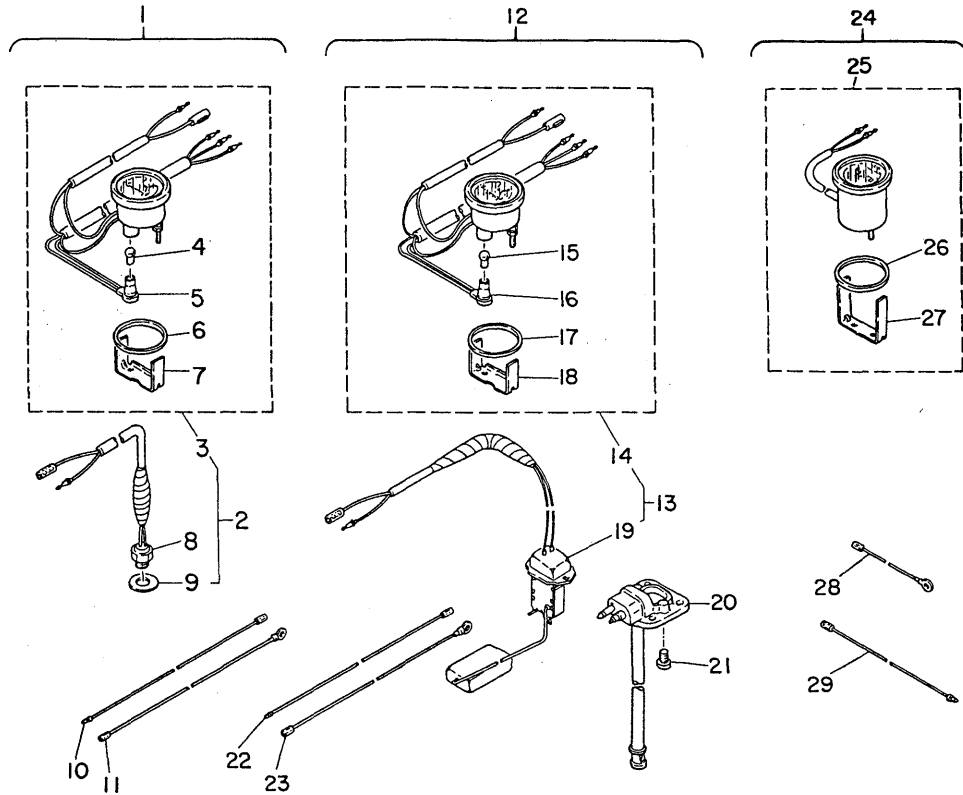
\* New parts number  
\* Not shown

Fig. 21 ACCESSORY PARTS I -'80/'81



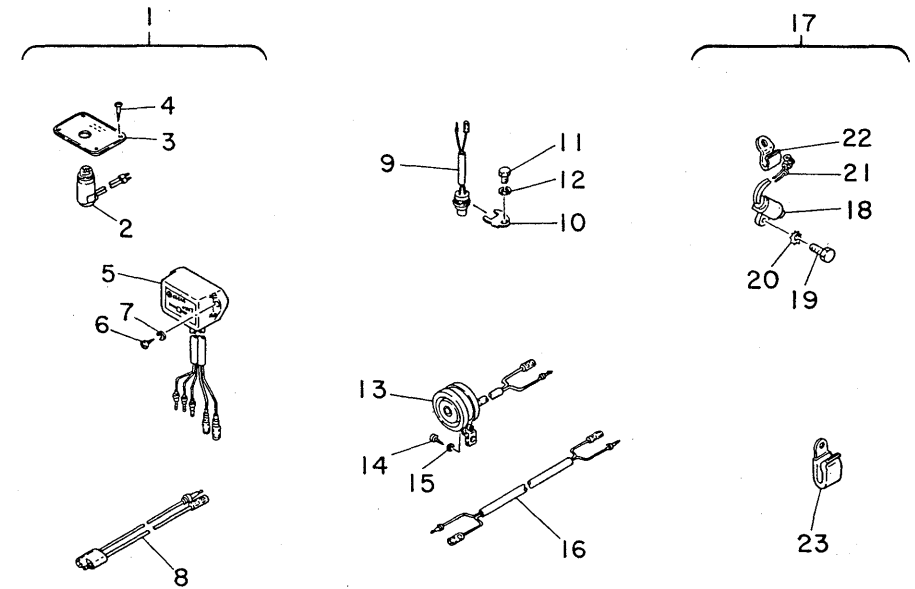
Ref.No.	Parts No.	Description	Q'ty	Ref.No.	Parts No.	Description	Q'ty
		<b>SPEEDOMETER</b>		15	688-83544-00	PLATE, fitting	1
1	688-W0081-00	SPEEDOMETER KIT	15	16	688-83553-10	WIRE, lead	1
2	688-83510-00	SPEEDOMETER ASS'Y	1	17	1E6-82151-00	FUSE (12V-10A)	1
3	688-83516-00	BULB (12V-1.7W)	1			<b>WATER PRESSURE METER</b>	
4	688-83536-00	SOCKET, meter	1	18	688-W0088-00	WATER PRESSURE METER KIT	15
5	688-83523-00	DAMPER	1	19	688-83660-00	WATER PRESSURE METER ASS'Y	1
6	688-83514-00	PLATE, fitting	1	20	688-83661-00	WATER PRESSURE GAUGE	1
7	688-83556-00	SENDER	1	21	688-83516-00	BULB (12V-1.7W)	1
8	90601-31402	CLIP, nylon 14	5	22	688-83536-00	SOCKET, meter	1
9	97780-40116	SCREW, panhead tapping	5	23	688-83664-00	DAMPER	1
		<b>TACHOMETER</b>		24	688-83665-00	PLATE, fitting	1
10	688-W0080-00	TACHOMETER KIT	15	25	688-83667-00	SENDER	1
11	688-83540-00	TACHOMETER ASS'Y	1	26	688-83666-00	TUBE	1
12	688-83516-00	BULB (12V-1.7W)	1	27	663-83668-00	NUT, nipple	2
13	688-83536-00	SOCKET, meter	1	28	90430-14115	GASKET	1
14	688-83523-00	DAMPER	1	29	90601-31402	CLIP, nylon 14	5
				30	97780-40116	SCREW, panhead tapping	5

Fig. 22 ACCESSORY PARTS 2 -'80/'81



Ref.No.	Parts No.	Description	Q'ty	Ref.No.	Parts No.	Description	Q'ty
<b>WATER TEMPERATURE METER</b>							
1	688-W0088-10	WATER TEMP. METER KIT	15	15	688-83516-00	BULB (12V-1.7W)	1
2	688-83590-00	WATER TEMP. METER ASS'Y	1	16	688-83536-00	SOCKET, meter	1
3	688-83594-00	WATER TEMP. GAUGE	1	17	688-83664-00	DAMPER	1
4	688-83516-00	BULB (12V-1.7W)	1	18	688-85756-00	PLATE, fitting	1
5	688-83536-00	SOCKET, meter	1	19	688-85752-00	FUEL SENDER	1
6	688-83664-00	DAMPER	1	20	663-24275-00	FUEL METER COMP.	1
7	688-85756-00	PLATE, fitting	1	21	98503-05010	SCREW, panhead	2
8	688-83591-00	THERMO UNIT	1	22	663-83553-Y0	WIRE, lead (Yellow)	1
9	90430-14115	GASKET	1	23	663-83553-A0	WIRE, lead	1
10	663-83553-Y0	WIRE, lead (Yellow)	1	<b>HOURLY METER</b>			
11	663-83553-A0	WIRE, lead	1	24	688-W0088-30	HOURLY METER KIT	15
<b>FUEL METER</b>							
12	688-W0088-20	FUEL METER KIT	15	25	688-83504-00	HOURLY METER ASS'Y	1
13	688-85750-00	FUEL METER ASS'Y	1	26	688-83664-00	DAMPER	1
14	688-85751-00	FUEL GAUGE	1	27	688-83557-00	PLATE, fitting	1
				28	663-83553-A0	WIRE, lead	1
				29	663-83553-Y0	WIRE, lead (Yellow)	1

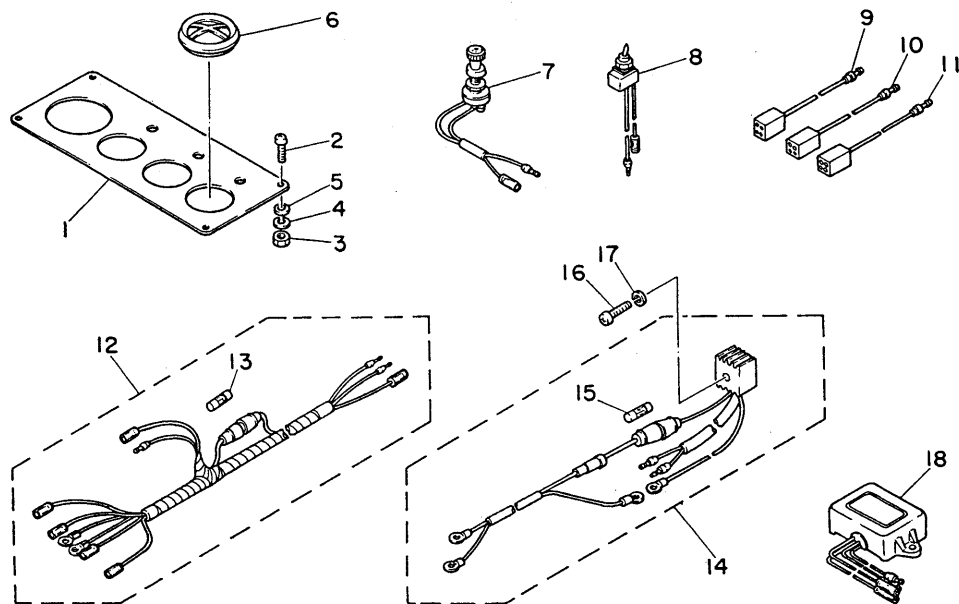
Fig. 23 ACCESSORY PARTS 3 -'80/'81



Ref.No.	Parts No.	Description	Q'ty	Ref.No.	Parts No.	Description	Q'ty
<b>CHARGE WARNING LAMP</b>							
1	688-W0088-40	PILOT LAMP KIT	15	14	97780-60516	SCREW, panhead tapping	1
2	663-84301-00	PILOT LAMP ASS'Y	1	15	92903-05600	WASHER	1
3	663-84309-00	PLATE, set	1	16	688-83373-10	LEAD, horn	1
4	95428-31316	SCREW, roundhead wood	4	<b>STOP SWITCH</b>			
5 *	663-81901-61	CHARGE WARNING UNIT ASS'Y	1	17	663-80000-80	STOP SWITCH KIT	15
*	663-81901-60	CHARGE WARNING UNIT ASS'Y	1	18	663-82530-00	STOP SWITCH ASS'Y	1
6	97780-60120	SCREW, panhead tapping	1	19	97313-05012	BOLT	1
7	92903-06600	WASHER	2	20	92990-05400	WASHER, tooth	1
8	663-82521-09	WIRE, lead	2	21	90480-06066	GROMMET	1
<b>OVERHEAT BUZZER</b>							
9	688-82560-00	THERMO-SWITCH ASS'Y	1	22	90465-08017	CLAMP	1
10	663-82588-00	PLATE	1	23	90465-06038	CLAMP	1
11	97313-06010	BOLT	1	24	90461-06M00	CLAMP	1
12	92903-06100	WASHER	1				
13	688-83383-10	BUZZER	1				

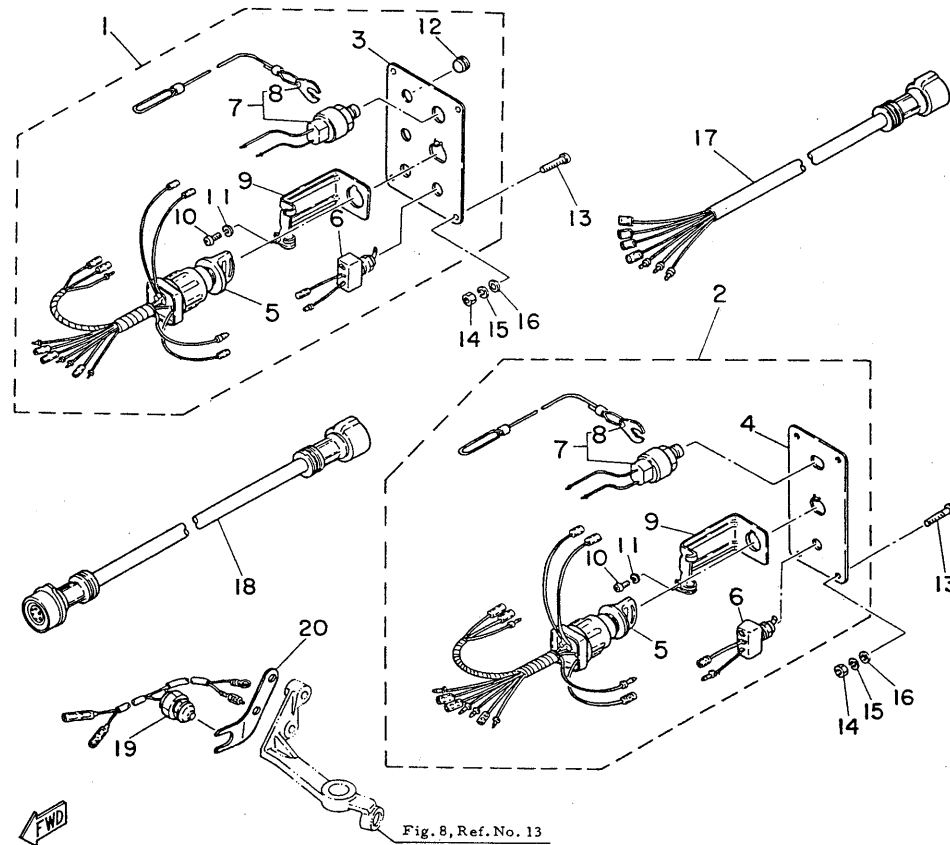
\* New parts number  
\* Not shown

Fig. 24 ACCESSORY PARTS 4 -'80/'81



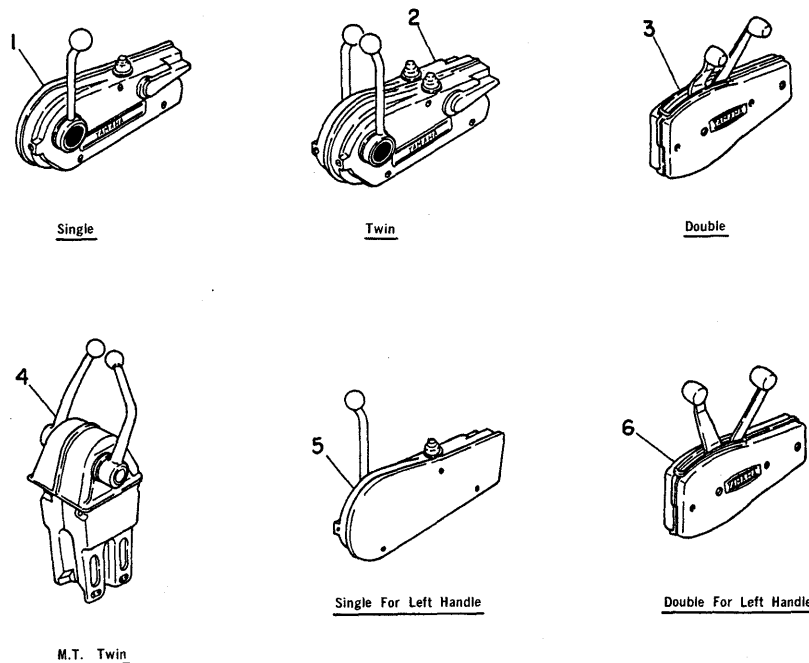
Ref.No.	Parts No.	Description	Q'ty	Ref.No.	Parts No.	Description	Q'ty
<b>METER PANEL</b>							
1	688-83611-00	PANEL, meter	1	10	688-82117-00	WIRE, lead (Black)	1
2	98903-05025	SCREW, bind	4	11	688-82521-00	WIRE, lead (Yellow)	1
3	95303-05600	NUT	4	12	688-83553-10	WIRE, lead	1
4	92903-05100	WASHER	4	13	1E6-82151-00	FUSE (12V-10A)	1
5	92903-05600	WASHER	4	14	676-81970-00	RECTIFIER ASS'Y	1
6	688-83559-00	COVER, meter	U.R.	15	663-82151-00	FUSE (12V-20A)	1
7	688-82520-00	LAMP SWITCH ASS'Y	} U.R.	16	97803-05030	SCREW, panhead	1
8	688-82526-00	SWITCH, lamp		17	92903-05100	WASHER	1
9	688-82149-00	WIRE, lead (Blue)	1	<b>VOLTAGE REGULATOR</b>			
				18	663-81910-10	VOLTAGE REGULATOR ASS'Y	1

Fig. 25 ACCESSORY PARTS 5 -'80/'81



Ref.No.	Parts No.	Description	Q'ty	Ref.No.	Parts No.	Description	Q'ty
<b>SWITCH PANEL</b>							
1	688-82570-10	SWITCH PANEL ASS'Y	} U.R.	11	92901-04008	WASHER	1
2	689-82570-10	SWITCH PANEL ASS'Y		1	12	688-82535-00	GROMMET
3	688-82571-10	SWITCH PANEL	} U.R.	13	98903-05025	SCREW, bind	4
4	689-82571-10	SWITCH PANEL		1	14	95303-05600	NUT
5	688-82508-10	MAIN SWITCH ASS'Y	1	15	92903-05100	WASHER	4
6	688-82574-00	SWITCH, choke	1	16	92903-05600	WASHER	4
7	688-82575-00	KILL SWITCH ASS'Y	1	17	688-82586-20	EXTENSION, wire harness	1
8	663-82556-70	STOPPER	1	18	688-82586-10	EXTENSION, wire harness (2m)	1
9	663-82581-01	STAY, cord clamp	1	<b>NEUTRAL SWITCH</b>			
10	98303-04008	SCREW, cylinderhead	1	19	697-82540-00	NEUTRAL SWITCH ASS'Y	1
				20	663-82554-01	STAY, neutral	1

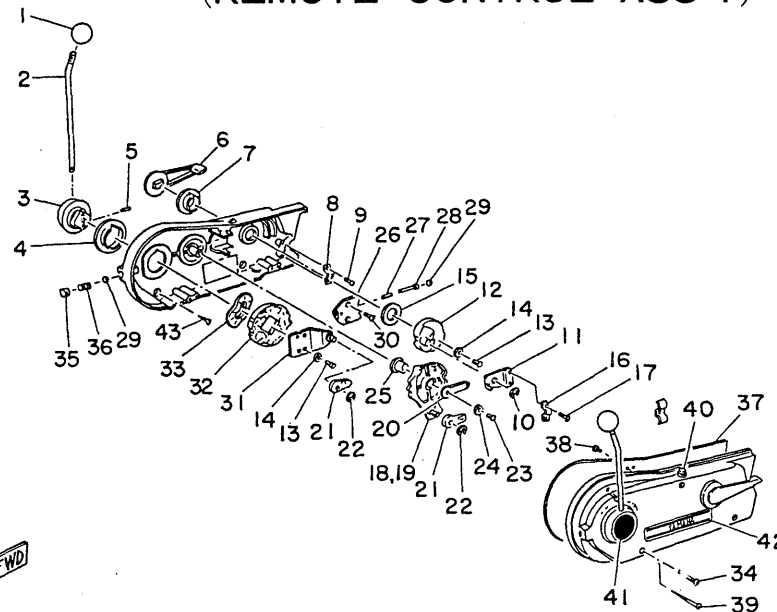
Fig. 26 ACCESSORY PARTS 6  
(REMOTE CONTROL) -'80/'81



Ref.No.	Parts No.	Description	Q'ty	Ref.No.	Parts No.	Description	Q'ty
▲ 1	701-48110-11	REMOTE CONTROL ASS'Y 1	1	4	701-48110-80	REMOTE CONTROL ASS'Y 8	1
▲ 2	701-48110-21	REMOTE CONTROL ASS'Y 2	1	5	701-48120-11	REMOTE CONTROL ASS'Y 1	1
3	701-48110-31	REMOTE CONTROL ASS'Y 3	1	6	701-48120-31	REMOTE CONTROL ASS'Y 3	1

▲ See Fig. 27 for detail service parts

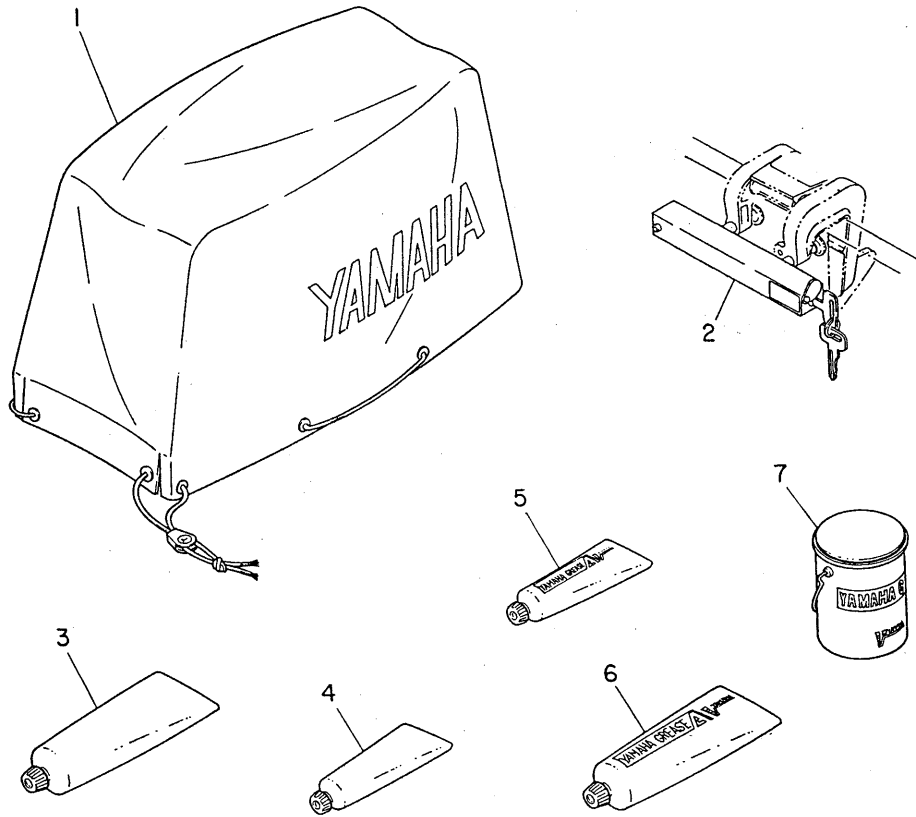
Fig. 27 ACCESSORY PARTS 7  
(REMOTE CONTROL ASS'Y) -'80/'81



Ref.No.	Parts No.	Description	Q'ty	Ref.No.	Parts No.	Description	Q'ty
			Single Twin				Single Twin
*	701-48110-11	REMOTE CONTROL ASS'Y 1 (See Fig. 26, Ref. No. 1)	1 -	21	701-48345-30	CABLE END, remote control	2 4
*	701-48110-21	REMOTE CONTROL ASS'Y 2 (See Fig. 26, Ref. No. 2)	- 1	22	93430-06024	CIRCLIP (E-66)	2 4
1	701-48118-10	GRIP, shift lever	1 2	23	90140-05008	SCREW	1 2
2	701-48137-10	LEVER, control	1 2	24	92990-05300	WASHER, tooth	1 2
3	701-48114-10	BOSS, control lever	1 2	25	701-48165-10	BUSHING	1 2
4	701-48116-10	BUSHING	1 2	26	701-48189-10	RETAINER	1 2
5	701-48127-10	SCREW	1 2	27	701-48159-10	SPRING 2	1 2
6	701-48152-10	KNOB, free accel.	1 2	28	701-48155-10	PLUNGER	1 2
7	701-48234-10	BUSHING 1	1 2	29	93503-08025	BALL, steel	2 4
8	701-48352-10	ANCHOR, cable	1 2	30	90141-05005	SCREW	2 4
9	90146-05004	SCREW, ovalhead	2 4	31	701-48132-10	LEVER, throttle 2	1 2
10	93430-10025	CIRCLIP (E-106)	1 2	32	701-48131-10	LEVER, throttle 1	1 2
11	701-48133-10	PLATE, link	1 2	33	701-48196-10	WASHER, wave	1 2
12	701-48153-10	SHAFT, free accel.	1 2	34	90141-05006	SCREW	- 3
13	90146-06003	SCREW, ovalhead	3 6	35	701-48171-10	BOLT	1 2
14	92990-06300	WASHER, tooth	3 6	36	701-48158-10	SPRING	1 2
15	701-48191-10	WASHER 1	1 2	37	701-48119-10	COVER	1 1
16	701-48352-10	ANCHOR, cable	1 2	38	90140-05009	SCREW	3 -
17	90146-05004	SCREW, ovalhead	2 4	39	90130-05003	SCREW	3 -
18	701-48148-10	LEVER, shift	- 1	40	701-82550-51	STOP SWITCH ASS'Y	1 2
19	701-48136-10	LEVER, shift	1 1	41	701-48125-51	MARK 1	1 1
20	701-48147-10	PLATE, lock	1 2	42	701-48126-51	MARK 2	1 1
				43	90130-05002	SCREW	3 3

\* Not shown

Fig. 28 ACCESSORY PARTS 8 '80/'81



Ref.No.	Parts No.	Description	Q'ty
1	90890-56876	ENGINE COVER	1
2	90890-46000	OUTBOARD LOCK	1
3	YM9-27837-61-2M	ANTI-CORROSION GREASE	U.R.
4	90890-69908	YAMAHA GREASE C (150g)	U.R.
YAMAHA GREASE			
5	90890-69910	YAMAHA GREASE A (50g)	} U.R.
6	90890-69911	YAMAHA GREASE A (250g)	
7	90890-69912	YAMAHA GREASE A (4Kg)	
YAMAHA BOND			
8	90890-05143	YAMAHA BOND (200g)	} U.R.
9	90890-05144	YAMAHA BOND (150g)	
10	90890-05074	YAMAHA BOND (100g)	

